

# Comparison study between open and laparoscopic liver resection in a Saudi tertiary center

Faisal A. Al-Saif, MD, Mosaed K. Aldekhayel, MD, Faisal Al-Alem, MD, Mazen M. Hassanain, MD, Raffif E. Mattar, MD, Abdulsalam Alsharabi, MD.

## ABSTRACT

**الأهداف:** مقارنة نتائج عمليات استئصال الكبد بالمنظار الجراحي بعمليات الفتح المجرة في مدينة جامعة الملك سعود الطبية.

**الطريقة:** مراجعة وصفية بأثر رجعي عُملت في مدينة جامعة الملك سعود الطبية. تم إدراج جميع المرضى البالغين الذين أُجريت لهم عمليات استئصال الكبد خلال الأعوام 2006–2017. في مجموعة عمليات المنظار، المرضى الذين تم تحويل عملية المنظار للفتح تم استثنائهم.

**النتائج:** تم إدراج 111 عملية استئصال للكبد، 22 (19.8%) أُجريت عن طريق المنظار، و 89 (80.1%) عن طريق الفتح. الأورام الخبيثة كانت أكثر الدلالات لإجراء العملية بين المجموعتين (78.5%). متوسط وقت العمليات كان 275 دقيقة عن طريق المنظار و 315 دقيقة عن طريق الفتح. نقل الدم داخل العملية حصل في (9%) من عمليات المنظار و (31.4%) في عمليات الفتح. نسبة المضاعفات كانت 13.6% في عمليات المنظار، أما عمليات الفتح فكانت 31.4%. نسبة الوفيات كانت 0% في عمليات المنظار، أما الفتح فكانت 5.6%.

**الخلاصة:** عمليات استئصال الكبد عن طريق المنظار تعتبر آمنة، وبالإمكان إجراؤها في الحالات الحميدة والخبيثة

**Objectives:** To compare King Saud University Medical City experience in laparoscopic liver resection with our previously established database for open resections.

**Methods:** A retrospective study was conducted at King Saud University Medical City, Riyadh, Saudi Arabia. All adult patients who underwent liver resection from 2006 to 2017 were included. Patients who had their procedure converted to open were excluded.

**Results:** Among the 111 liver resections included, 22 (19.8%) were performed laparoscopically and 89 (80.1%) were performed using the open technique.

Malignancy was the most common indication in both groups (78.5%). The mean operative time was 275 min (SD 92.2) in the laparoscopic group versus 315 min (SD 104.3) in the open group. Intraoperative blood transfusion was required in the laparoscopic (9%) and open groups (31.4%). The morbidity rate was 13.6% in the laparoscopic group and 31.4% in the open group, and the mortality rate was 0% in the laparoscopic group and 5.6% in the open group.

**Conclusion:** Laparoscopic liver resection appears to be a safe technique and can be performed in various benign and malignant cases.

*Saudi Med J* 2019; Vol. 40 (5): 452-457  
doi: 10.15537/smj.2019.5.24086

From the Department of Surgery (Al-Saif, Al-Alem, Hassanain, Mattar, Alsharabi), King Saud University; Department of Surgical Oncology (Aldekhayel), King Fahad Medical City, Riyadh Saudi Arabia; and from the Department of Oncology (Hassanain), McGill University Health Center, Montreal, Canada.

Received 6th January 2019. Accepted 14th March 2019.

Address correspondence and reprint request to: Dr. Mosaed K. Aldekhayel, Department of Surgical Oncology, King Fahad Medical City, Riyadh, Kingdom of Saudi Arabia.  
E-mail: m.aldekhayel@gmail.com  
ORCID: orcid.org/0000-0001-9515-8123

In the last 3 decades, laparoscopic surgical liver procedures have evolved rapidly and become the standard of care in many cases.<sup>1-3</sup> In 1992, Gagner et al<sup>4</sup> reported the first case of a laparoscopic non-anatomical liver resection for a focal nodular hyperplasia. A year later, Azagra et al<sup>5</sup> performed the first laparoscopic anatomical resection. Since the publication of these case reports, multiple reports of major liver tri-segmentectomies and lobectomies have been recorded in the literature.<sup>6</sup> Studies suggest laparoscopic liver resection minimizes the increase in portal hypertension, the risk of ascites, and postoperative bleeding.<sup>7</sup> Moreover, it reduces

insensible fluid loss because the viscera are not subjected to exposure. Therefore, the need for intravenous fluid is reduced, and third space sequestration associated with hyperaldosteronism is avoided.<sup>8</sup> The laparoscopic techniques gained their appeal because of their numerous advantages in comparison with the open technique in terms of postoperative pain, hospital stay, return to activity, and abdominal wall preservation.<sup>1-3</sup> However, laparoscopic liver resection is not without challenges, with many reports on the learning curves of performing such procedures.<sup>9</sup> These points include the techniques for liver mobilization, vascular control, and parenchymal transection; the possibility of port site metastases, and the points related to the laparoscopic equipment.<sup>1</sup> As majority of the lesions requiring liver resection are malignant tumors,<sup>1</sup> laparoscopic liver resection oncological efficacy remains a point of debate; although several studies proved that expert surgical teams could perform a laparoscopic liver resection with a safety record that was indistinguishable from that of the open technique.<sup>5,8,10-14</sup> Laparoscopic liver resection is a safe, evolving technique that should be thought as a first-line in various hepatic pathologies.

**Methods.** A retrospective study conducted at King Saud University Medical City, Riyadh, Kingdom of Saudi Arabia from 2006 to 2017. A total of 111 consecutive liver resections were performed: 89 were performed using the open technique and 22 using the laparoscopic technique. A written ethical approval was not obtained as the data collected retrospectively.

Patients who had their laparoscopic surgery converted to open were excluded.

The procedures were performed by 3 surgeons. Laparoscopic surgeries were performed in a low central venous pressure anesthesia. For left lobe lesions, patients were placed in a supine position, whereas for right lobe lesions, patients were placed in a left lateral position. Umbilical port was used for scope, in addition to 3 other working ports. Laparoscopic ultrasound was always performed, and line of resection is marked with cautery. We did not use Pringle's maneuver during laparoscopic resection, and parenchyma was divided using harmonic scalpel. Large vessels and pedicles were

stapled using a stapler, and specimen was retrieved using a bag through a Pfannenstiel incision. Demographic data, body mass index, past medical history, American Society of Anesthesiologists grade, pathology, operative details, and postoperative course were collected. Postoperative complications were graded using the Clavien-Dindo classification.<sup>15</sup> Liver dysfunction was reported on the basis of the Schindl score,<sup>16</sup> which defined dysfunction based on total serum bilirubin, lactate, prothrombin time, and encephalopathy. Mortality was defined as any death occurring in-hospital or within 90 days of surgery.

**Statistical analysis.** Data were analyzed using the Statistical Package for Social Studies version 22.0 (IBM Corp, Armonk, NY, USA). The continuous variables were expressed as the mean (standard deviation), and the categorical variables were expressed as percentages. Student's t-test was used for the continuous variables, and the Chi-square test and Fisher's exact test were used for the categorical variables. Survival curves were estimated using the Kaplan-Meier method, followed by the log rank test. A *p*-value of less than 0.05 was considered statistically significant.

**Results.** The mean age was  $55.9 \pm 14.3$  years in the laparoscopic group (LG) and  $49.4 \pm 15.1$  years in the open group (OG). Most of the patients in the LG were female at 63.6% (versus male patients at 36.3%), whereas most of the patients in the OG were male at 51.6% (versus female patients at 48.3%). The median preoperative hospitalization periods were 4 days (IQR: 1.5-5) in the LG and 4 days (IQR: 2-8) in the OG. The most common American Society of Anesthesiologists grade was grade II in both groups at 10 (45.45%) and 28 (31.46%) in the LG and OG, respectively (Table 1).

The most common resection indication was malignancy-related pathology at 81.9% in the LG and 54.5% in the OG. Metastasis from colorectal cancer was the most common indication for both LG (77.7%) and OG (54.5%). Hepatocellular carcinoma was the second most common malignant indication. Benign disorders were only 15.9% in combination, with focal nodular hyperplasia being the most common benign condition in both LG (66.6%) and OG (28.5%) (Table 2).

The mean operative time was 275.3 min (92.2) in the LG and 315.6 min (104.3) in the OG. A major liver resection (defined as the resection of 3 or more segments) was performed in 36.3% (LG) and 44.9% (OG). Two patients (9%) required blood transfusion in the LG and 28 patients (31.4%) in the OG (*p*=0.015). Concurrent intra-abdominal surgery, which is defined as a major surgical procedure performed in the same

**Disclosure.** Authors have no conflict of interests, and the work was not supported or funded by any drug company.

**Table 1** - Comparison of the clinicopathologic features between the two groups.

Variable	Laparoscopic (mean ± sd)	Open (mean ± sd)	P=
Body mass index	26.23 ± 3.09	26.59 ± 6.37	0.839
WBC*	6.74 ± 1.69	8.28 ± 4.15	0.015
Hematocrit*	38.95 ± 11.59	34.89 ± 5.19	0.026
Platelets*	258.25 ± 66.99	263.31 ± 107.41	0.842
INR*	1.01 ± 0.08	1.16 ± 0.19	<0.001
PTT*	36.81 ± 3.35	37.5 ± 8.8	0.733
BUN*	5.4 ± 3.53	4.1 ± 1.77	0.035
Creatinine*	81.9 ± 64.78	73.98 ± 23.74	0.423
T. Bilirubin*	9.74 ± 8.78	12.83 ± 12.01	0.294
Albumin*	34.22 ± 3.42	30.78 ± 6.77	0.004
ALP*	95.9 ± 32.91	126.19 ± 85.48	0.127
AST*	27.05 ± 28.58	119.31 ± 138.03	<0.001
ALT*	45.65 ± 44.73	111.02 ± 105.57	<0.001
Number of chemo cycles	1.3 ± 2.11	9.73 ± 6.16	<0.001
Chemo free period (days)	52.13 ± 147.43	197.53 ± 210.41	0.093
Operative time (minutes)	275.3 ± 92.22	315.61 ± 104.37	0.129
Length of stay (days)	10.46 ± 5.43	17.1 ± 14.25	0.103
Number of lesions	1.56 ± 0.784	2.03 ± 1.48	0.076
<b>ASA Score [n(%)]</b>			
Class I	2.00 (9.09)	5.00 (5.61)	
Class II	10.00 (45.45)	28.00 (31.46)	
Class III	3.00 (13.63)	12.00 (13.48)	
Class IV	0.00 (0.00)	2.00 (2.24)	

\*Pre operation, SD - standard deviation, WBC - white blood cells, ASA - American Society of Anesthesiology, INR - International normalized ratio, PTT - Partial thromboplastin time, BUN - Blood urea nitrogen, ALP - Alkaline phosphatase, AST - aspartate transaminase, ALT - Alanine transaminase

**Table 2** - Indications for liver resection.

Indication for liver resection	Laparoscopic n (%)	Open n (%)	P=	
<b>Malignant indications (n=84, 78.5%)</b>				
Colorectal cancer metastasis	14 (77.78)	36 (54.55)	0.716	
Hepatocellular carcinoma	2 (11.1)	12 (18.2)		
Cholangiocarcinoma	1 (5.56)	7 (10.61)		
Liver adenocarcinoma	0	1 (1.52)		
Breast metastasis	0	2 (3.03)		
Neuroendocrine tumor	1 (5.56)	1 (1.52)		
Sarcomatoid	0	1 (1.52)		
Hepatoblastoma	0	1 (1.52)		
Colorectal cancer invasion	0	1 (1.52)		
Monophasic synovial sarcoma metastasis	0	1 (1.52)		
Other malignancies	0	3 (4.55)	0.669	
<b>Total of malignancy</b>	18 (99.8)	66 (99.7)		
<b>Benign indications (n=17, 15.9%)</b>				
Simple cyst	0	1 (7.14)		
Adenoma	0	1 (7.14)		
Focal nodular hyperplasia	2 (66.67)	4 (28.57)		
Hemangioma	1 (33.33)	4 (28.57)		
Hydatid cyst	0	3 (21.43)		
Motor vehicle crash liver injury	0	1 (7.14)		
<b>Total of benign</b>	3 (99.9)	14 (99.7)		
Benign thought to be malignant (n=6, 5.4%)	1 (100)	5 (100)	-	

**Table 3** - Major intra-abdominal surgeries done in concurrent with liver resection in both groups.

Intra-abdominal surgeries
<b>Laparoscopic technique</b>
Diverting loop ileostomy
Transverse loop colostomy
Right hemicolectomy with primary anastomosis
<b>Open technique</b>
Colostomy
Anterior resection
Transverse colectomy with primary anastomosis
Right hemicolectomy
Abdominal wall resection
Low anterior resection
Splenectomy

setting, was performed in 13.6% (LG) and 7.8% (OG) (Table 3). Epidural anesthesia was used in only one patient (4.5%) in the LG and 33 (37%) in the OG ( $p<0.001$ ).

Complications were graded according to the Clavien-Dindo classification. A Clavien–Dindo grade 1 or more accounted for 13.6% in the LG and 31.4% in the OG. Based on the Schindl score, severe liver dysfunction was noted in one patient in the LG and 12 in the OG ( $p<0.001$ ). None of the 22 LG patients required postoperative blood transfusion, whereas 11 patients (12.3%) required it in the OG. One patient (4.5%) in the LG and 14 (15.7%) in the OG developed septic shock. The median total hospital stay was 9 days [IQR (7.5-11)] in the LG and 12 days [IQR (8.1-9.2)] in the OG ( $p=0.034$ ). No 90-day mortality was seen in the LG, but it was observed in 5 patients in the OG. One case had a positive margin in the LG and 5 cases in the OG (Table 4).

The median follow-up was 10 months (IQR: 3.25-21.85) for the LG patients and 13 months (IQR: 1.99-22.43) for the OG patients. Recurrence of the disease was observed in 4 cases in the LG, 2 developed intrahepatic recurrences, and 2 developed recurrence in

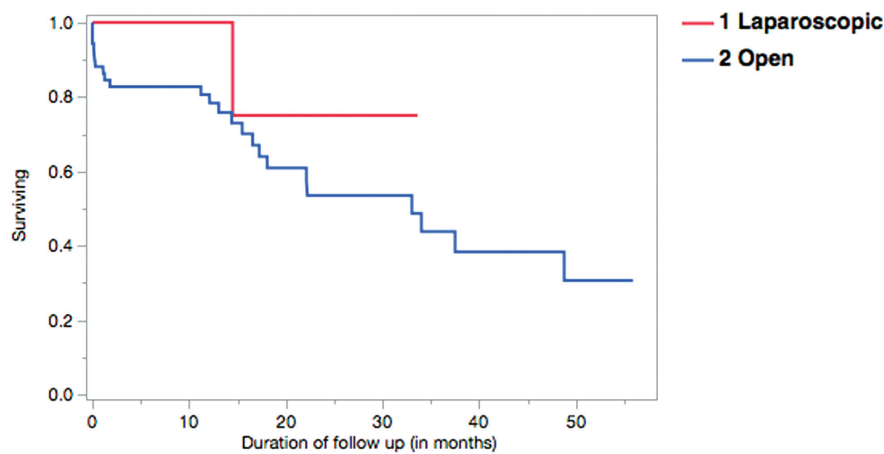
**Table 4** - Outcome of patients undergoing laparoscopic vs. open liver resection

Outcome	Laparoscopic (n=22)	Open (n=89)	P-value
Bleeding that required transfusion*	0	3 (3.37)	0.459
Acute renal insufficiency/failure	0	5 (5.62)	0.252
Respiratory failure	1 (4.55)	6 (6.74)	0.42
Return to operating room	0	3 (3.37)	0.4
Post operative liver dysfunction 50:50 rule	0	12 (13.48)	0.034
Reintubation*	0	7 (7.87)	0.19
Failure to wean post 48 hours	0	5 (5.62)	0.311
Cardiac arrest*	0	3 (3.37)	0.501
Stroke*	0	0	
Coma*	0	2 (2.25)	0.629
Myocardial Infraction*	0	0	
Venous thromboembolism*	1 (4.55)	2 (2.25)	0.519
Pneumonia*	0	2 (2.25)	0.57
Surgical site infection*	0	2 (2.25)	0.541
Recurrence liver	2 (9.09)	19 (21.35)	0.001
Organ space infection*	1 (4.55)	6 (6.74)	0.347
Recurrence lung	2 (9.09)	3 (3.37)	0.645
Fascial dehiscence*	0	0	
Recurrence other	1 (4.55)	9 (10.11)	0.101
Complications*	4 (18.18)	24 (26.97)	0.067
Recurrence/progression*	4 (18.18)	23 (25.84)	0.101
Schindl: INR	21 (23.60)	68 (76.40)	0.039
Schindl: Total bilirubin	21 (28.40)	53 (71.60)	0.009
Schindl: Lactate	18 (34.60)	34 (65.40)	<0.001
Schindl: Encephalopathy	21 (23.10)	70 (76.90)	-
Schindl liver dysfunction	18 (34.60)	34 (65.40)	<0.001

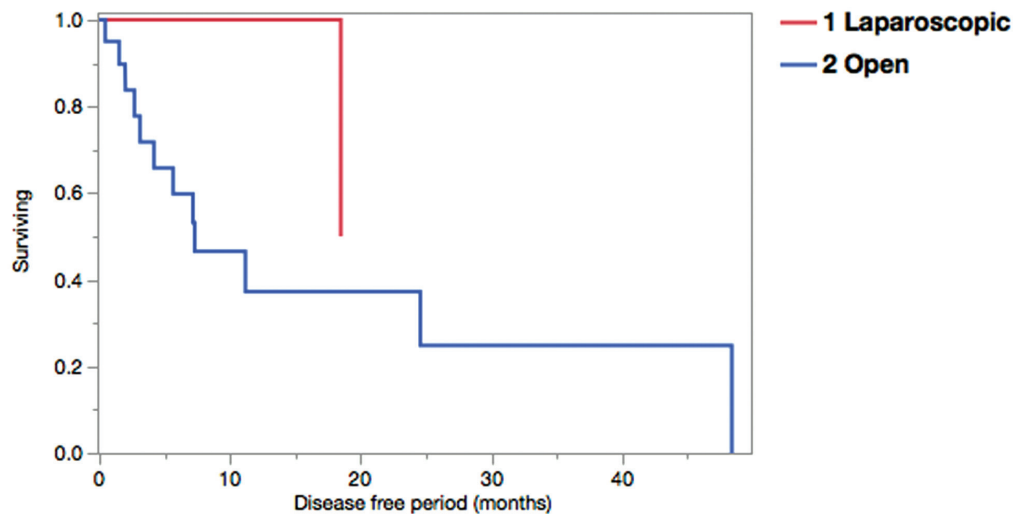
Values are presented as number and percentage (%). \*Post operation, INR - International normalized ratio

the lung. In the OG, 27 cases had recurrence, mainly intrahepatic (21 cases), and 5 cases had recurrence in the lung. The median times to recurrence were 12.4 months (IQR: 1.80-18.80) in the LG and 5.78 months (IQR: 2.02-9.75) in the OG. The overall and disease-free survival curves are shown in Figures 1 and 2.

**Discussion.** Laparoscopic liver resection is gaining popularity among hepatobiliary surgeons, and some authors consider it as the gold standard among favorable resections.<sup>17-19</sup> In our study, we compared the open technique<sup>20</sup> with the laparoscopic liver resection in cases performed at King Saud University Medical City, Riyadh, Saudi Arabia with a focus on morbidity, mortality, and several intraoperative variables. The rate of complications (13.6%) and the median hospital stay (9 days) in our LG were comparable with those in the literature.<sup>21-24</sup> Silva et al<sup>25</sup> and Kooby et al<sup>26</sup> reported the poor effect of intraoperative blood transfusion on the post-liver resection outcome. In our study, the intraoperative requirement of blood transfusion was significantly lower in the LG. Postoperative liver dysfunction is a major cause of morbidity and mortality in post-hepatectomy patients.<sup>27</sup> On the basis of the Schindl score, we found that the laparoscopic approach was superior to the open technique. No significant difference in the 90-day mortality was found between the 2 groups, consistent with recent studies.<sup>28-30</sup> Epidural anesthesia is frequently used in major abdominal surgeries, including liver resections.<sup>31</sup> The need for epidural analgesia was found to be significantly lower in the laparoscopic approach, and patients were placed on patient controlled analgesia instead. Most of



**Figure 1** - Kaplan-Meier overall survival for Laparoscopic Vs Open hepatectomy. Hazard ratios (HR) = 4.04 with (95% CI) = (0.54 – 30.11) and  $p=0.174$ .



**Figure 2** - Kaplan-Meier disease-free survival for Laparoscopic Vs Open hepatectomy. Hazard ratios (HR) = 2.69 with (95% CI) = (0.39 – 21.41) and  $p=0.350$ .

the cases that required laparoscopic liver resection were malignant conditions, and metastatic colorectal cancer was the most common indication of liver resection. We found no difference in the surgical margin of resected specimens, as reported by Leong et al<sup>32</sup> and Mala et al<sup>33</sup>. The differences between the 2 groups could be explained by volume disparity and selection bias. The unit is still early in the learning curve of laparoscopic liver surgery. Therefore, the main determinant of our approach is the lesion site, as more anterior lesions are easily feasible for laparoscopic surgery. Nevertheless, when we compared the patient characteristics between the OG and LG, we found no significant differences in the type of resection, body mass index, or age.

In conclusion, this study showed that laparoscopic liver surgery is feasible, safe, and comparable with the previously published open benchmark. However, additional prospective studies are required to overcome the small sample size and retrospective limitations. The further standardization of the technique and the accumulation of laparoscopic surgical experience in liver surgery are still needed to improve the outcomes and to extend our selection of cases.

**Acknowledgment.** We would like to thank Scribendi, Ontario, Canada (<https://www.scribendi.com/>) for the English language editing.

## References

1. Cherqui D. Laparoscopic liver resection. *Br J Surg* 2003; 90: 644-646.
2. Berggren U, Gordh T, Grama D, Haglund U, Rastad J, Arvidsson D. Laparoscopic versus open cholecystectomy: Hospitalization, sick leave, analgesia and trauma responses. *Br J Surg* 1994; 81: 1362-1365.
3. Trondsen E, Reiertsen O, Andersen O, Kjaersgaard P. Laparoscopic and open cholecystectomy. A prospective, randomized study. *Eur J Surg* 1993; 159: 217-221.
4. Gagner M, Rheault M, Dubuc J. Laparoscopic partial hepatectomy for liver tumor. *Surg Endosc* 1992; 6: 99.
5. Azagra JS, Goergen M, Gilbert E, Jacobs D. Laparoscopic anatomical (hepatic) left lateral segmentectomy technical aspects. *Surg Endosc* 1996; 10: 758-761.
6. Dagher I, O'Rourke N, Geller DA, Cherqui D, Belli G, Gamblin TC, et al. Laparoscopic major hepatectomy. *Ann Surg* 2009; 250: 856-860.
7. Cannon RM, Brock GN, Marvin MR, Buell JF. Laparoscopic liver resection: an examination of our first 300 patients. *Journal of the American College of Surgeons* 2011; 213: 501-507.
8. Huscher C, Lirici MM, Chiodini S. Laparoscopic liver resections. *Semin Laparosc Surg* 1998; 5: 204-210.
9. Saito Y, Yamada S, Imura S, Morine Y, Ikemoto T, Iwahashi S, et al. A learning curve for laparoscopic liver resection: an effective training system and standardization of technique. *Transl Gastroenterol Hepatol* 2018; 3: 45.
10. Cherqui D, Husson E, Hammoud R, Malassagne B, Stephan F, Bensaïd S et al. Laparoscopic liver resections: a feasibility study in 30 patients. *Ann Surg* 2000; 232: 753-762.
11. Katkhouda N, Hurwitz M, Gugenheim J, Mavor E, Mason RJ, Waldrep DJ, et al. Laparoscopic management of benign solid and cystic lesions of the liver. *Ann Surg* 1999; 229: 460-466.
12. Descottes B, Lachachi F, Sodji M, Valleix D, Durand-Fontanier S, Pech de Laclause B, et al. Early experience with laparoscopic approach for solid liver tumors: initial 16 cases. *Ann Surg* 2000; 232: 641-645.
13. Cipriani F, Rawashdeh M, Stanton L, Armstrong T, Takhar A, Pearce NW, et al. Propensity score-based analysis of outcomes of laparoscopic versus open liver resection for colorectal metastases. *Br J Surg* 2016; 103:1504-1512.



14. Ratti F, Fiorentini G, Cipriani F, Catena M, Paganelli M, Aldrighetti L. Laparoscopic vs open surgery for colorectal liver metastases. *JAMA Surgery* 2018; 153: 1028.
15. Dindo D, Desmartines N, Clavien PA. Classification of surgical complications: a new proposal with evaluation in a cohort of 6336 patients and results of a survey. *Ann Surg* 2004; 240: 205-213.
16. Schindl MJ, Readhead DN, Fearon KC, Garden OJ, Wigmore SJ. The value of residual liver volume as a predictor of hepatic dysfunction and infection after major liver resection. *Gut* 2005; 54: 289-296.
17. Azagra J, Goergen M, Brondello S, Calmes M, Philippe P, Schmitz B. Laparoscopic liver sectionectomy 2 and 3 (LLS 2 and 3): towards the "gold standard". *Journal of Hepato-Biliary-Pancreatic Surgery* 2009; 16: 422-426.
18. Dokmak S, Raut V, Aussilhou B, Ftériche F, Farges O, Sauvanet A, et al. Laparoscopic left lateral resection is the gold standard for benign liver lesions: a case-control study. *HPB (Oxford)* 2014; 16: 183-187.
19. Lacerda C, Bertulucci P, Oliveira A. Totally laparoscopic liver resection: new brazilian experience. *ABCD Arq Bras Cir Dig* 2014; 27: 191-195.
20. Al-alem F, Mattar R, Fadl O, Alsharabi A, Al-Saif F, Hassanain M. Morbidity, mortality and predictors of outcome following hepatectomy at a Saudi tertiary care center. *Ann Saudi Med* 2016; 36: 414-421.
21. Aldrighetti L, Pulitanò C, Catena M, Arru M, Guzzetti E, Casati M, et al. A Prospective Evaluation of Laparoscopic Versus Open Left Lateral Hepatic Sectionectomy. *J Gastro Surg* 2007; 12: 457-462.
22. Abu Hilal M, McPhail M, Zeidan B, Zeidan S, Hallam M, Armstrong T, et al. Laparoscopic versus open left lateral hepatic sectionectomy: A comparative study. *Eur J Surg Oncol* 2008; 34: 1285-1288.
23. Tang C, Tai C, Ha J, Siu W, Tsui K, Li M. Laparoscopy versus open left lateral segmentectomy for recurrent pyogenic cholangitis. *Surgical Endoscopy* 2005; 19: 1232-1236.
24. Endo Y, Ohta M, Sasaki A, Kai S, Eguchi H, Iwaki K, et al. A comparative study of the long-term outcomes after laparoscopy-assisted and open left lateral hepatectomy for hepatocellular carcinoma. *Surg Laparosc Endosc Percutan Tech* 2009; 19: 171-174.
25. Silva Junior J, Cezario T, Toledo D, Magalhães D, Pinto M, Victoria L. Complications and prognosis of intraoperative blood transfusion. *Rev Bras Anesthesiol* 2008; 58:454-461.
26. Kooby D, Stockman J, Ben-Porat L, Gonen M, Jarnagin W, Dematteo R, et al. Influence of Transfusions on Perioperative and Long-Term Outcome in Patients Following Hepatic Resection for Colorectal Metastases. *Ann Surg* 2003; 237: 860-870.
27. Kauffmann R, Fong Y. Post-hepatectomy liver failure. *Hepatobiliary Surg Nutr* 2014; 3: 238-246.
28. Kaneko H, Otsuka Y, Kubota Y, Wakabayashi G. Evolution and revolution of laparoscopic liver resection in Japan. *Ann Gastroenterol Surg* 2017; 1: 33-43.
29. Xie S, Xiong J, Liu X, Chen H, Iglesia-García D, Altaf K, et al. Laparoscopic versus open liver resection for colorectal liver metastases: a comprehensive systematic review and meta-analysis. *Sci Rep* 2017; 7: 1012.
30. Jiang B, Yan X, Zhang J. Meta-analysis of laparoscopic versus open liver resection for hepatocellular carcinoma. *Hepatol Res* 2018; 48: 635-663.
31. Tzimas P, Prout J, Papadopoulos G, Mallett S. Epidural anesthesia and analgesia for liver resection. *Anaesthesia* 2013; 68: 628-635.
32. Leong WQ, Ganpathi IS, Kow A, Madhavan K, Chang S. Comparative study and systematic review of laparoscopic liver resection for hepatocellular carcinoma. *World J Hepatol* 2015; 7: 2765.
33. Mala T, Edwin B, Gladhaug I, Fosse E, Soreide O, Bergan A, et al. A comparative study of the short-term outcome following open and laparoscopic liver resection of colorectal metastases. *Surg Endosc* 2002; 16: 1059-1063.