

REVIEW ARTICLE

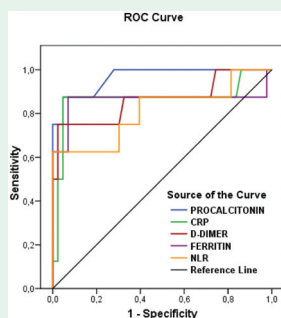
The expected economic burden on the healthcare system because of quarantining patients with monkeypox virus

Alshahrani determines the expected economic cost for healthcare systems due to quarantine in the case of the monkeypox virus. A systematic literature review of studies on similar virus outbreaks was performed. The findings affirm that quarantine effectively mitigates the spread of a virus outbreak, but it has high direct and indirect costs that can only be justifiable for a dangerous virus with high mortality. The monkeypox virus presents moderate risk, unlike high-risk diseases for which quarantine is mandatory. The study recommends the introduction of mass vaccination programs and public awareness and sensitization forums to inform the population about the best behavioral practices to curb the spread of monkeypox virus.

see page 231

ORIGINAL ARTICLES

COVID-19 infection during pregnancy. A retrospective study in a city in the Southeastern region of Turkey



The results of receiver operating characteristic curve analysis for C-reactive protein, D-dimer, ferritin, and neutrophil/lymphocyte ratio.

Akgül et al evaluate maternal and fetal clinical outcomes in SARS-CoV-2 infected pregnant women during the whole period of the pandemic in a single province in the southeast of Turkey. They concluded that in the 3rd trimester of pregnancy, obesity and hypothyroidism were found to be risk factors for severe-critical cases of COVID-19 infection, and the clinical course was more severe with a higher rate of mortality in the recent period of the pandemic.

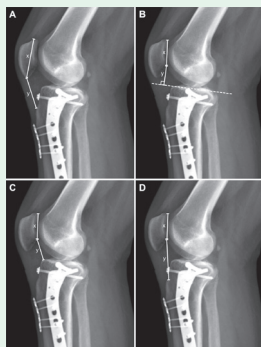
see page 268

Self-care practices among heart failure patients. A cross-sectional study in Saudi population

Aljohani describes self-care practices among Saudi heart failure (HF) patients and identify sociodemographic characteristics contributing to self-care practices. He concluded that Self-care practices in this study showed higher scores than those reported in international studies. Further studies are warranted to explore everyday self-care needs and challenges among HF patients.

see page 277

Patellar height changes after treatment of tibia plateau fractures. A radiological analysis



Sample measurements of patellar height index values are seen on the X-ray of the patient who underwent lateral plate due to tibial plateau fracture.

Doğan et al determine the impact of tibial plateau fractures on patellar height and the factors affecting this impact in a retrospective prognostic study. They concluded that Long-term functions of tibial plateau fractures should be evaluated not only with a painless range of motion but also with patellar height. It should be noted that the Luo classification, which evaluates the plateau 3-dimensionally, may be associated with changes in postoperative patellar height values

see page 306