

Leiomyosarcoma of the bladder in a 16-year-old girl with a history of cyclophosphamide therapy for bilateral retinoblastoma during infancy

Ali A. Al-Zahrani, MBBS, Baher A. Kamal, MD, Hamed M. Eldarawani, FRCSI, Tariq M. Hashim, MD.

ABSTRACT

A 16-year-old female with bladder leiomyosarcoma had a history of bilateral retinoblastoma at 6 months of life. She received cyclophosphamide chemotherapy after surgical enucleation. In this report, we discussed the possible role of retinoblastoma or cyclophosphamide as a target for the development of bladder leiomyosarcoma.

Saudi Med J 2006; Vol. 27 (4): 531-533

Second tumors are known to develop at remote sites in survivors of hereditary or childhood retinoblastoma, and are characterized by having a cumulative incidence with aging.¹ Among these tumors is leiomyosarcoma of the bladder which constitutes about 0.5% of bladder tumors.² To our knowledge, there are very few reports on leiomyosarcoma of the bladder with a history of retinoblastoma associated with cyclophosphamide treatment.³⁻⁵ We present a new case with a history of bilateral retinoblastoma during infancy that was treated by enucleation followed by cyclophosphamide therapy.

Case Report. A 16-year-old Saudi girl presented with painless hematuria and frequency of micturition for 5 months. The girl had enucleation of both eyes for bilateral retinoblastoma at the age of 6 months, and received cyclophosphamide as well as radiotherapy and vincristine for one year postoperatively. Her examination revealed no any palpable masses, organomegaly or lymphadenopathy. Her liver and kidney functions were within normal

ranges. There were no malignant or atypical cells in the urine cytology. Intravenous urography showed a large irregular-filling defect that filled most of the bladder cavity. Pelvic ultrasound showed a large mass that was heterogeneous in echogenicity. It filled most of the bladder cavity. In unenhanced CT, the mass was 100 Hounsfield (HUs) units in density and arising from the anterior wall with a sessile stalk. The computerized tomography scan (**Figure 1**) revealed no evidence of lymphadenopathy or metastasis. Cystoscopic examination revealed a large well-circumscribed sessile mass in the anterior wall. The mass had a smooth surface, and was largely covered by intact mucosa. Multiple cup biopsies showed an infiltrating neoplasm composed of relatively uniform interlacing fascicles of spindle-shaped cellular growth. The nuclei were large, pleomorphic, hyperchromatic and cigar shaped. There was 15-20 mitotic activity per high power field. The cytoplasm was abundant and eosinophilic (**Figure 2**). Immunohistochemical staining was positive for the mesenchymal immunoreactive stains vimentin, desmin and smooth

From the Department of Urology and Pathology, King Faisal University, King Fahd Hospital of the University, Al-Khobar, Kingdom of Saudi Arabia.

Received 14th August 2005. Accepted for publication in final form 15th November 2005.

Address correspondence and reprint request to: Dr. Ali A. Al-Zahrani, King Faisal University, Medical College, PO Box 60492, Dammam 31545, Kingdom of Saudi Arabia. Tel/Fax. +966 (3) 8966748. E-mail: ahzhzrani@yahoo.com

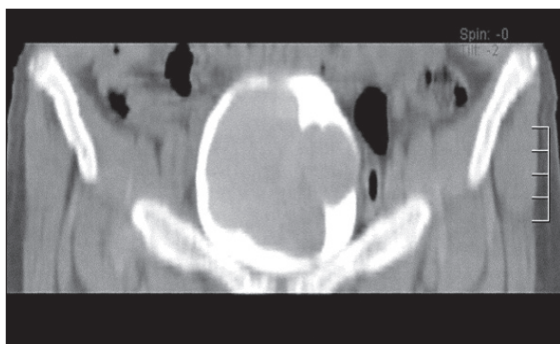


Figure 1 - Coronal CT images showing 100 Hounsfield units density mass, arising from the anterior wall with a sessile stalk.

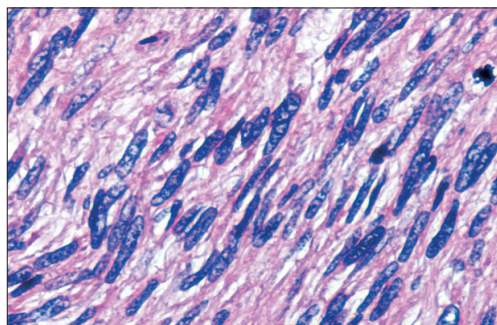


Figure 2 - Hematoxylin and Eosin stain showing spindle cell cellular growth. Mitotic activity is obvious. The nuclei are pleomorphic, hyperchromatic and cigar shaped.

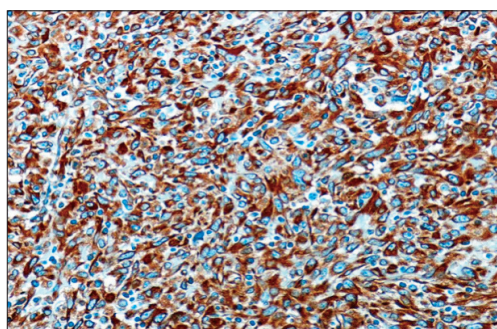


Figure 3 - Diffusely and strongly positive vimentin stain.

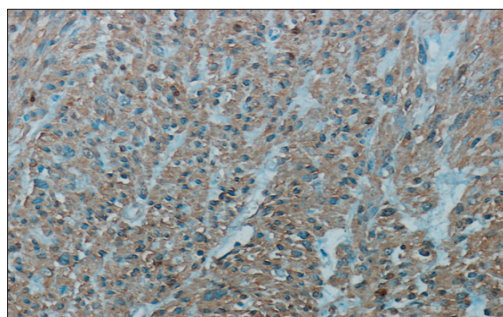


Figure 4 - Positive smooth muscle actin stain.

muscle actin, but was negative for the epithelial immunoreactive stain cytokeratin (**Figures 3 & 4**). Final diagnosis was a highly malignant spindle cell tumor that was consistent with leiomyosarcoma of the urinary bladder. Cystectomy was carried out, and the patient was referred for postoperative radiotherapy.

Discussion. Non-ocular primary tumors, especially osteosarcoma, are known to develop in survivors of hereditary retinoblastoma.³ Few reports suggested that cyclophosphamide treatment in patients with a history of retinoblastoma can target the development of leiomyosarcoma of the bladder as a second tumor.^{4,5} However, bladder leiomyosarcoma develops after cyclophosphamide treatment for malignancies other than retinoblastoma.⁶⁻⁸ It also develops after retinoblastoma without cyclophosphamide treatment.² Both hereditary retinoblastoma and cyclophosphamide treatment were found to stimulate development of second tumors through gene mutation. Hereditary retinoblastoma causes stimulation of the second retinoblastoma gene (RBI) allele,¹⁰ whereas, the metabolites of cyclophosphamide, especially acrolein, that are excreted in urine cause acute toxicity to the bladder mucosa and possibly hemorrhagic cystitis. This is followed by rapid epithelial regeneration and increased risk of mutation.⁴ Patients who were previously exposed to cyclophosphamide therapy will have a higher incidence of developing leiomyosarcoma of the urinary bladder than the general population; 9.2% and 0.5% successively.⁹ The relative risk of developing bladder cancer was increased up to 6.4 fold in cyclophosphamide-exposed patients. The risk increases up to 11.3 when hemorrhagic cystitis is present.⁴ It is suggested from these findings that the risk of development of leiomyosarcoma of the bladder is increased in the presence of a history of hereditary retinoblastoma or cyclophosphamide treatment. This risk is further accentuated in the presence of a history of hereditary retinoblastoma followed by cyclophosphamide treatment.

References

1. Moll AC, Imhof SM, Schouten-Van Meeteren AY, Kuik DJ, Hofman P, Boers M. Second primary tumors in hereditary retinoblastoma: a register based study, 1945-1997: Is there an age effect on radiation-related risk? *Ophthalmology* 2001; 108: 1109-1114.
2. Liang SX, Lakshmanan Y, Woda BA, Jiang Z. A high-grade primary leiomyosarcoma of the bladder in a survivor of retinoblastoma. *Arch Pathol Lab Med* 2001; 125: 1231-1234.
3. Moll AC, Imhof SM, Bouter LM, Kuik DJ, Den Otter W, Bezemer PD, et al. Second primary tumors in-patients with hereditary retinoblastoma: register-based follow-up study, 1945-1994. *Int J Cancer* 1996; 67: 515-519.

4. Kawamura J, Sakurai M, Tsukamoto K, Tochigi H. Leiomyosarcoma of the bladder eighteen years after cyclophosphamide therapy for retinoblastoma. *Urol Int* 1993; 51: 49-53.
5. Motta L, Porcaro AB, Ficarra V, D'Amico A, Piubello Q, Communale L. Leiomyosarcoma of the bladder fourteen years after cyclophosphamide therapy for retinoblastoma. *Scand J Urol Nephrol* 2001; 35: 248-249.
6. Rowland RG, Eble JN. Bladder leiomyosarcoma and pelvic fibroblastic tumor following cyclophosphamide therapy. *J Urol* 1983; 130: 344-346.
7. Carney CN, Stevens PS, Fried FA, Mandell J. Fibroblastic tumor of the urinary bladder after cyclophosphamide therapy. *Arch Surg* 1982; 106: 247-249.
8. Thrasher JB, Miller GJ, Wettlaufer JN. Bladder leiomyosarcoma following cyclophosphamide therapy for lupus nephritis. *J Urol* 1990; 143: 119-121.
9. Tanguay C, Harvey I, Houde M, Srigley JR, Tetu B. Leiomyosarcoma of urinary bladder following cyclophosphamide therapy: report of two cases. *Mod Pathol* 2003; 16: 512-514.
10. Chauvienc L, Mosseri V, Quintana E, Desjardins L, Schlienger P, Doz F, Dutrillaux B. Osteosarcoma following retinoblastoma: age at onset and latency period. *Ophthalmic Genet* 2001; 22: 77-88.