

Role of saffron (*Crocus sativus L.*) and honey syrup on aluminum-induced hepatotoxicity

Ali A. Shati, MSc, PhD, Saad A. Alamri, MSc, PhD.

ABSTRACT

الأهداف: يتناول هذه البحث دراسة تأثير مركب كلوريد الألومنيوم على زيادة مستوى سمية الكبد من الناحية البيوكيميائية والجزيئية والدور العلاجي للزعفران والعسل في التخلص من هذه السمية.

الطريقة: أُجريت هذه الدراسة في قسم الأحياء في كلية العلوم بجامعة الملك خالد، أبها، المملكة العربية السعودية وذلك خلال الفترة من يوليو 2009م إلى أغسطس 2009م. لقد تم استخدام سلالتين من الفئران وهما (BALB/c و C57BL/6)، وذلك باختيار 20 حيواناً من كل سلالة، ومن ثم قُسمت الحيوانات عشوائياً إلى أربع مجموعات وهي: مجموعة التحكم (المجموعة السليمة)، والمجموعة التي تعاني من سمية كلوريد الألومنيوم، والمجموعة التي تعاني من السمية وتم علاجها بالزعفران، والمجموعة التي تعاني من السمية وتم علاجها بالعسل. لقد تم قياس معدل أنزيمات الكبد وهي ناقلة ببتيد غاما غلوتاميل، وناقلة أمين الآلانين، ونازعة أمين الاسبارتات، وأنزيم فوسفاتازا القلوي، بالإضافة إلى مجموع البليروبين ومعدل تأكسد الدهون في جميع المجموعات. كما تم عمل مسح لمرسال الرنا (mRNA)، وبعد ذلك عُرّلت جينات التنظيم التناقصي والتزايدية للخلية وتم نسخها وتحديد تسلسلها الجيني.

النتائج: لقد كان هناك ارتفاعاً واضحاً في مستويات الكولسترول والدهون الثلاثية، ومستويات ناقلة ببتيد غاما غلوتاميل، وناقلة أمين الآلانين، ونازعة أمين الاسبارتات، وأنزيم فوسفاتازا القلوي، ومعدل تأكسد الدهون بالإضافة إلى ارتفاع سكر الدم وذلك في المجموعات التي تعاني من سمية كلوريد الألومنيوم بالمقارنة مع مجموعة التحكم، إلا أن علاج هذه الحيوانات بالزعفران أو العسل أدى إلى تحسن في وظائف الكبد وتقليل تأكسد الدهون. لقد تم الكشف عن 7 جينات ناتجة عن التنظيم التناقصي (3 في سلالة BALB/c و 4 في سلالة C57BL/6)، و5 جينات ناتجة عن التنظيم التزايدية للخلية (2 في سلالة BALB/c و 3 في سلالة C57BL/6)، كما لوحظ نشاط جين Aa2-245 في مجموعات الحيوانات التي تعاني من سمية كلوريد الألومنيوم والتي تم علاجها إما بالزعفران أو العسل وذلك في سلالة BALB/c.

خاتمة: تشير الدراسة بأن استخدام الزعفران أو العسل يقلل من سمية كلوريد الألومنيوم على الكبد وذلك من خلال تخفيف تأثيره عليها من الناحية البيوكيميائية والجزيئية.

Objectives: To study the biochemical and molecular hepatotoxicity induced by aluminium chloride (AlCl₃) and the protective role of saffron and honey against such toxicity.

Methods: This study was performed in the Department of Biology, College of Science, King Khalid University, Abha, Kingdom of Saudi Arabia between July and August 2009. Two mice strains, BALB/c and C57BL/6 (20 animals from each strain), were used and randomly divided into 4 groups: control group; AlCl₃ group; AlCl₃+saffron group; and AlCl₃+honey group. Changes in liver biochemical markers such as gamma-glutamyl transpeptidase (GGT), alanine transaminase (ALT), aspartate aminotransferase (AST), alkaline phosphatase (ALP), and total bilirubin and lipid peroxidation levels were estimated. Induced and suppressed mRNA in the liver homogenate was scanned followed by up- and down-regulated genes were isolated, cloned, and sequenced.

Results: There was a significant increase in the cholesterol levels, triglycerides, GGT, ALT, AST, ALP, lipid peroxidation, and presence of hyperglycemia in the AlCl₃ group compared to the control. However, treating those animals exposed to AlCl₃ by saffron and honey improved the disrupted liver biochemical markers and alleviated the increase of lipid peroxidation. Seven down-regulated genes (3 BALB/c and 4 C57BL/6) and 5 up-regulated genes (2 BALB/c and 3 C57BL/6) were observed. Aa2-245 gene was observed as being up-regulated in AlCl₃+saffron and AlCl₃+honey groups in the BALB/c strain.

Conclusion: The use of saffron and honey minimized the toxic effect of AlCl₃ in the liver by alleviating its disruptive effect on the biochemical and molecular levels.

Saudi Med J 2010; Vol. 31 (10): 1106-1113

From the Department of Biology, College of Science, King Khalid University, Abha, Kingdom of Saudi Arabia.

Received 17th July 2010. Accepted 30th August 2010.

Address correspondence and reprint request to: Dr. Ali A. Shati, Department of Biology, College of Science, King Khalid University, PO Box 10255, Abha 61321, Kingdom of Saudi Arabia. E-mail: shati100@yahoo.com

Aluminum (Al) is a constituent of cooking utensils, medicines, deodorants, and food additives. This has led to its easy access into the human body.¹ Sources of Al include corn, yellow cheese, salt, herbs, spices, tea, cosmetics, cookwares, and containers. Exposure to Al can disrupt many enzymes. For example, salts of Al may inhibit the action of acid and alkaline phosphatases, phosphodiesterase, and phosphooxydase.² In addition, exposure to Al can affect the triglyceride metabolism and triglyceride concentrations in the body.^{3,4} It has been reported that Al exposure causes impairments in glucose utilization, free radical-mediated cytotoxicity, lipid peroxidation, reduced cholinergic function, impact on gene expression, and altered protein phosphorylation.⁵ Aluminum has been found to cause oxidative stress in the plasma and the tissues of male rabbits.⁶ The mechanism of Al induced toxicity has been attributed to its ability to potentiate the activity of iron ion $[\text{Fe}(2^+)]$ and Fe_3^+ ions in such a way as to cause oxidative damage.⁷ Molecular changes such as DNA damages and gene suppression or expression may happen to hepatic cells when the model animal exposed to toxic materials.⁸ Recently, ribonucleolytic activity, which is fundamental for the biological activities of proteins, has been found in many proteins with known biological activities.⁹ Aluminum has been reported to affect the activities of translation machinery components in mouse liver in vivo and in vitro as Al can bind to phosphorylated bases on DNA, induce considerable changes in chromatin structure and disrupt protein synthesis, and catabolism.^{5,9} Herbal/natural products represent one of the most common forms of complementary and alternative medicines.¹⁰ They are readily available and can be purchased from supermarkets and pharmacies. As these products can be taken without supervision or medical prescription, they must be safe for human health.^{11,12} Many natural product extracts have been found to have a variety of pharmacological and antioxidant effects.^{13,14} For example, *Crocus sativus L.*, commonly known as saffron, is a plant cultivated in various parts of the world including Iran, China, Spain, Italy, and Greece. Phytochemical studies of saffron have shown that the main chemicals responsible for its color are crocins, which are a series of mono and di-glucosyl esters of crocetin, a polyene dicarboxylic acid (8,8-diapocarotene-8, 8-dioic acid).¹⁵ On the contrary to the majority of carotenoids' families, these compounds are extensively used in the food industries as food colorants due to their unique water-soluble behavior.^{14,15} Many studies have indicated that crocins have various pharmacological effects such as protecting hepatocytes,¹⁶ inhibition of tumor cell proliferation,¹⁷ and protection against cardiovascular diseases.¹⁸ Among the mechanisms underlying their various protective actions, the antioxidant activity has

been hypothesized as being responsible for the various pharmacological effects of crocins.¹⁹ Honey syrup of wild honey is another natural product produced by the honeybees and constitutes of a natural supersaturated sugar solution, which is mainly composed of a complex mixture of carbohydrates.²⁰ It also includes certain minor components such as enzymes, proteins, vitamins, flavonoids, phenolic acids, amino, and organic acids.²¹ However, the composition of honey depends on the plant species visited by the honeybees and the environmental, processing and storage conditions.²² Honey has been traditionally used for a range of different purposes and has a great potential to serve as a natural food antioxidant.^{22,23} Enzymes in honey serve as antioxidants by helping the removal of free radicals and protection against oxidative damages.²⁴ Honey consumption has been reported to be effective in increasing the total plasma antioxidants in humans.²⁵ As there has been no study has investigated the biochemical and molecular roles of water saffron extract and honey syrup against hepatotoxicity induced by aluminium chloride (AlCl_3), this study aimed to explore the biochemical and molecular changes induced by AlCl_3 in the liver of 2 mice strains. In addition, the protective effects of water saffron extract and honey syrup on hepatotoxicity induced by AlCl_3 was investigated.

Methods. *Natural products extracts.* Dried red stigmas of saffron were obtained from a local supermarket in the city of Abha, Saudi Arabia. Saffron was immersed in distilled water (500 mg ml^{-1}) for 24 hours, filtered, and prepared every 4 days. Wild honey was collected from the Aseer region, which is in the southern province of Saudi Arabia. It was diluted with distilled water (500 mg ml^{-1}) and made into syrup. It was also prepared every 4 days. Both saffron and honey extracts were intraperitoneally injected at 500 mg kg^{-1} body weight once a day for the experimental period (45 days).

Animal grouping. This study was carried out in the Department of Biology, College of Science, King Khalid University, Abha, Kingdom of Saudi Arabia between July and August 2009. Twenty BALB/c and 20 C57BL/6 mice weighing approximately 35-40 g were used in the experiment. Animals were obtained from the Animal House, College of Science, King Khalid University, Abha, Saudi Arabia. Ethical approval was obtained from the College of Science Ethical Committee, King Khalid University and the experiment was performed according to the International Guidelines for the Care and Use of Laboratory Animals. Animals of each mice strains were given food and water ad libitum and randomly divided into 4 groups ($n=5$ in each group). Control group: mice were given normal saline (0.9%

sodium chloride [NaCl]) for the experimental period. AlCl₃ group: mice were daily intraperitoneally injected with 40 mg kg⁻¹ body weight of AlCl₃ (pH, 6.8) freshly prepared every 4 days for the experimental period. AlCl₃+saffron group: mice were daily co-administered intraperitoneally with 40 mg kg⁻¹ body weight AlCl₃ and water extract of saffron (200 mg kg⁻¹ body weight) for the experimental period. AlCl₃+honey group: mice were daily co-administered intraperitoneally with 40 mg kg⁻¹ body weight AlCl₃ and honey syrup (500mg kg⁻¹ body weight) for the experimental period. At the end of the experimental period, the mice were slaughtered and blood samples were collected. Liver tissues were weighed and homogenized in phosphate buffer solution pH 7.4 and stored at -80°C until used.

Samples and biochemical parameters: Butyryl cholinesterase and L-γ-glutamyltransferase activities were measured in sera according to Knedel and Bottger²⁶ and Szasz²⁷ respectively. Activities of alanine aminotransferase (ALT) and aspartate aminotransferase (AST) in sera were assayed according to Reitman and Frankel.²⁸ Alkaline phosphatase (ALP) activity was measured at 405 nm by the formation of paranitrophenol from para-nitrophenyl-phosphate as a substrate using the method of Belfield and Goldberg.²⁹ Total bilirubin was assayed using the method of Walter and Grade.³⁰ Furthermore, the contents of serum glucose, cholesterol, and triglycerides were measured using the methods of Trinder,³¹ Wieland and Seidel,³² and Fossati and Prencipe.³³ Liver thibarbituric acid reactive substances (TBARS) were assayed using the method of Ohkawa et al.³⁴

Isolation of total RNA from supernatant of liver homogenates and cDNA synthesis: A 100µl of animal supernatant of liver homogenate was subjected to RNA extraction using QIAGEN-QIAamp RNA blood mini kit according to the manufacturer's procedures (QIAGEN, Hilden, Germany). Reverse transcription reactions were performed using an oligo dT primer. The 25µl reaction mixture was prepared with 2.5µl of 5X buffer with magnesium chloride (MgCl₂), 2.5µl of 2.5mM deoxynucleosides (dNTPs), 1µl of 10pmol primer, 2.5µl RNA and 0.2µl reverse transcriptase enzyme (100U µl⁻¹). Polymerase chain reaction (PCR) amplification was performed in a thermalcycler (Eppendorf) program at 95°C for 5 minutes, 42°C for one hour, 72°C for 10 minutes and soak at 4°C.³⁵

Differential display for detection of up-down regulated genes: The cDNA was subjected to a second PCR using 18S rRNA forward primer as an arbitrary primer (5'-GCA AGT CTG GTG CCA GCC-3'). The PCR reaction was performed as follows: a 25µl reaction mixture was prepared with 2.5µl 10x Taq DNA polymerase buffer (10 mM Tris HCl [pH 8.3]), 25mM

potassium chloride [KCl]), 2.5µl 50mM MgCl₂, 2µl primer (40 pmol µl⁻¹), and 0.25µl of Taq polymerase (AmpliTaq, Perkin- Elmer, 5u µl⁻¹), 2.5µl from the cDNA, 2.5µl dNTPs 4mM, and 12.75µl of dH₂O. The PCR reaction was performed in 9700 thermal cycler (Perkin-Elmer) and the PCR conditions were performed as follows: initial denaturation at 95°C for 5 minutes, followed by 40-cycles (94°C for 1 minute, 53°C for 1 minute and 72°C for 2 minutes; final extension, 72°C for 10 minutes). Electrophoresis was performed at 80 Volts with 0.5x TBE buffer in 1.5% agarose gel.³⁶ Gel was stained in 0.5µg ml⁻¹ (w/v) ethidium bromide solution and destained in deionized water. Finally, gel was visualized and photographed by using a gel documentation system.

Cloning of the up and down regulated DNA band: The resultant PCR product was excised from the gel and purified using a QIA quick gel extraction kit (QIAGEN Inc., Germany). The purified PCR product was cloned using TA-Cloning kit (Invitrogen, USA). The screened recombinant plasmid was subjected to DNA sequencing using M13 universal primer (Macrogen Company, Korea).

Sequence analysis and GenBank accession numbers: A blast search was performed for the DNA sequence obtained and this sequence was then submitted to the GenBank under the accession number, HM042681.

Phylogenetic analysis for the obtained gene: Pair-wise and multiple DNA sequence alignments were carried out using CLUSTALW (1.82).³⁷ A bootstrap neighboring tree was generated using MEGA438 from CLUSTALW alignments.³⁷

Statistical analysis. Statistical analyses were performed using the Statistical Package for the Social Sciences for Windows (SPSS, version 10.0, Chicago, IL, USA). Data are presented as means with their standard deviations. Statistical evaluation of the data was performed using one-way Analysis of Variance followed by a post-hoc least significant difference (LSD) test. P-values less than 0.05 were considered to be statistically significant.

Results. Biochemical tests: A significant increase in butyryl cholinesterase, ALP, GGT, AST and bilirubin levels was found in the AlCl₃ groups compared to their matched control groups in both mice strains (Table 1). The aqueous extract of saffron and the honey syrup showed a significant alleviation in the increased levels of butyryl cholinesterase, ALP, GGT, AST and bilirubin levels in both mice strains (Table 1). There was a hyperglycemia and a significant increase in both total cholesterol and triglycerides levels in the AlCl₃ groups compared to their matched control groups in both mice strains. The aqueous extract of saffron and honey syrup showed a significant improvement in the levels of

Table 1 - Liver function enzymes, butryl cholinesterase (UL⁻¹), L-γ-glutamyltransferase (GGT) (U L⁻¹), aspartate transferase (AST), alanine aminotransferase (ALT) (UL⁻¹) activities, alkaline phosphatase (ALP) (UL⁻¹), and bilirubin level (mg dl⁻¹) in different mice groups (BALB/c and C57BL/6).

Parameters	BALB/c				C57BL/6			
	Control	AlCl ₃	AlCl ₃ +honey	AlCl ₃ +saffron	Control	AlCl ₃	AlCl ₃ +honey	AlCl ₃ +saffron
Butryl cholinesterase	1282.7 ± 72.5	7167.3 [‡] ± 43.8	2370.8 ^{‡,a} ± 91.6	2470.8 ^{‡,a} ± 72.2	706.7 ± 3.6	1215.9 [‡] ± 6.6	1109.7 ^{‡,b} ± 4.9	964.9 ^{‡,a} ± 11.2
GGT	5.6 ± 0.5	14.6 [‡] ± 2.1	9.2 ^b ± 0.6	8.1 ^b ± 0.8	16.3 ± 0.9	32 [‡] ± 1.6	26.6 ^b ± 2	15.6 ^c ± 7.7
ALT	5.5 ± 0.5	19.8 [‡] ± 1.9	11.6 ^{‡,a} ± 1.1	9 ^{‡,a} ± 1.2	15.8 ± 1.3	35.4 [‡] ± 1.1	28.1 ^{‡,a} ± 1.8	23.8 ^{‡,a} ± 0.7
AST	9.6 ± 1.1	15.4 [‡] ± 1.1	12.8 ^{‡,b} ± 0.8	11.6 ^c ± 1.1	20 ± 1.6	34.6 [‡] ± 2.3	30.4 ^{‡,a} ± 2.1	27 ^{‡,a} ± 1.6
Total bilirubin	0.5 ± 0.1	2.2 [‡] ± 0.1	1.3 ^{‡,a} ± 0.1	0.9 ^a ± 0.1	1.5 ± 0.3	2.8 [‡] ± 0.2	2.6 [‡] ± 0.4	2.2 ^{‡,b} ± 0.4
ALP	63.1 ± 2.8	92.3 [‡] ± 1.4	91.3 [‡] ± 1.3	70.7 ^{‡,a} ± 1.1	50.8 ± 1.1	61.2 [‡] ± 1.4	59.8 [‡] ± 0.9	57.3 ^{‡,a} ± 0.9

Values are expressed as mean ± SD.
 Control group compared with AlCl₃, AlCl₃+honey, and AlCl₃+saffron groups, **p*<0.05, †*p*≤0.01, ‡*p*≤0.001.
 AlCl₃ group compared with AlCl₃+honey and AlCl₃+saffron groups; ^a*p*≤0.001, ^b*p*≤0.01.

Table 2 - Serum glucose (mg dl⁻¹), total cholesterol (mg dl⁻¹), and triglycerides (mg dl⁻¹) levels in different mice groups (BALB/c and C57BL/6).

Parameters	BALB/c				C57			
	Control	AlCl ₃	AlCl ₃ +honey	AlCl ₃ +saffron	Control	AlCl ₃	AlCl ₃ +honey	AlCl ₃ +saffron
Glucose	39.7 ± 2.9	100.2 [‡] ± 13.4	87.8 ^{‡,a} ± 4.4	81.6 ^{‡,a} ± 6.2	44.4 ± 2.8	101.4 [‡] ± 8.4	65.2 ^{‡,a} ± 3.2	85.2 ^{‡,a} ± 3.2
Cholesterol	98.6 ± 1.3	121.2 [‡] ± 1.2	110 ^{‡,a} ± 0.7	104.4 ^{‡,a} ± 3.6	103 ± 1.6	153.6 [‡] ± 2.1	134.8 ^{‡,a} ± 0.8	127.6 ^{‡,a} ± 9.7
Triglyceride	69.8 ± 1.4	113.7 [‡] ± 3.4	85.2 ^{‡,a} ± 3.3	73.6 ^{‡,a} ± 3.4	112.2 ± 0.83	178.4 [‡] ± 2.1	129.2 ^{‡,a} ± 3.7	117.8 ^{‡,a} ± 1.9

Values are expressed as mean ± SD.
 Control group compared with AlCl₃, AlCl₃+honey, and AlCl₃+saffron groups, **p*<0.05, †*p*≤0.01, ‡*p*≤0.001.
 AlCl₃ group compared with AlCl₃+honey and AlCl₃+saffron groups ^a*p*≤0.001.

Table 3 - Concentration of liver thiobarbituric acid reactive substances (TBARS) (nmole mg⁻¹) in different mice groups (BALB/c and C57BL/6).

Parameters	BALB/c				C57BL/6			
	Control	AlCl ₃	AlCl ₃ +honey	AlCl ₃ +saffron	Control	AlCl ₃	AlCl ₃ +honey	AlCl ₃ +saffron
TBARS	125.9 ± 12.7	218.2 [‡] ± 5.3	153.4 ^{‡,a} ± 11.7	165.2 ^{‡,a} ± 6.8	126.8 ± 9.4	207.1 [‡] ± 7.2	130.1 [‡] ± 10.1	134.4 [‡] ± 15.5

Values are expressed as mean ± SD.
 Control group compared with AlCl₃, AlCl₃+honey, and AlCl₃+saffron groups, **p*<0.05, †*p*≤0.01, ‡*p*≤0.001.
 AlCl₃ group compared with AlCl₃+honey and AlCl₃+saffron groups ^a*p*≤0.001

glucose, triglycerides and total cholesterol in both mice strains (Table 2). An increase in lipid peroxidation in liver homogenates of the AlCl₃ groups in both mice strains was indicated by the high significant increase in TBARS (Table 3). The protective effect of the aqueous extract of saffron and honey syrup shows a decrease in the level of TBARS of both mice strains in the AlCl₃+saffron and the AlCl₃+honey group in both mice strains (Table 3).

DNA-based molecular techniques: The up and down regulated genes in the examined animal liver homogenates showed that more than 36 band patterns were obtained by using the 18S primer as an arbitrary primer. Approximately 12 different up- and down-

regulated genes were observed among the 36 genes (Figure 1). The up and down regulated genes had different molecular weights, ranging from 1.1Kbp to 50bp. Five different genes were observed within the BALB/c mice strain (3 down-regulated and 2 up-regulated) and 7 different genes were demonstrated in the C57BL/6 mice strain (4 down-regulated and 3 up-regulated) (Figure 1). A band with a molecular weight of 0.5kbp (up-regulated) from the AlCl₃+honey group in the BALB/c mice strain was selected to be a representative gene for all the up-regulated genes obtained. The sequence analysis revealed that the selected up-regulated gene was Aa2-245 liver regenerative gene (ribonuclease, RNase

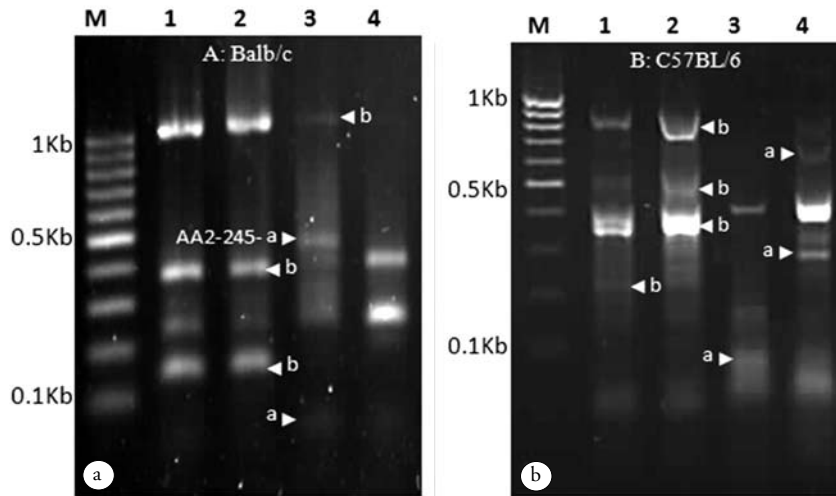


Figure 1 - Panels a and b) represents differential display for the BALB/c and C57BL/6 mice treated with $AlCl_3$ and with administrating of saffron extract and honey syrup. Lanes M: 1Kb ladder DNA marker, lane 1: control, lane 2: $AlCl_3$, lane 3: $AlCl_3$ +saffron and lane 4: $AlCl_3$ +honey. a - indicates up-regulated, b - indicates for the down-regulated genes.

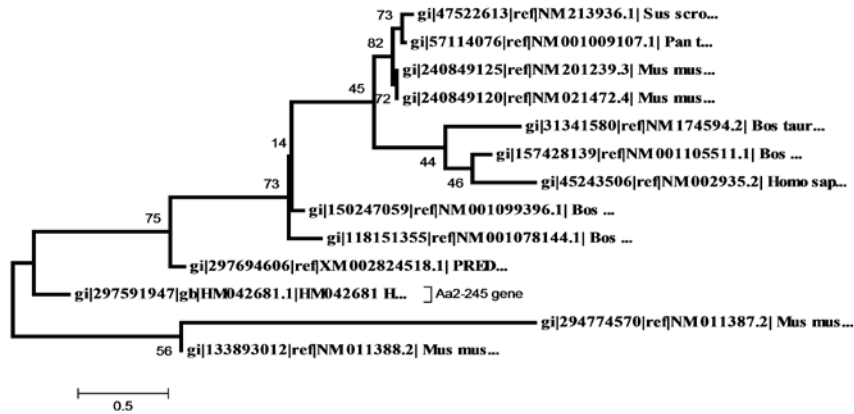


Figure 2 - Phylogenetic tree showing the evolutionary relationship between Aa2-245 liver regenerative gene nucleotide sequence and the other ribonuclease, RNAase family 4. The neighbor-joining method was used to construct the tree. The numbers on the branches represent bootstrap support for 1,000 replicates. Names refer to the accession number of the nucleotide sequences that encode the corresponding reverse transcriptase genes. Sus scro. - *Sus scrofa*, Pan t. - *Pan troglodytes*, Mus mus. - *Mus musculus*, Bos taur. - *Bos Taurus*, Homo sap. - *Homo sapiens*, PRED - predicted as *Pongo abelii*

A family 4). When the Aa2-245 was compared with other ribonuclease genes, the results postulated that the Aa2-245 was closely related to the ribonuclease RNAase gene isolated from *Mus musculus* (294774570 and 133893012) with a similarity of 65% (Figure 2).

Discussion. Aluminum exposure can result in its accumulation in the liver and hence it can be toxic to hepatic tissue at high concentrations.³⁹ Changes in aminotransferase activities could be expected to occur in association with a pathology involving the necrosis of the liver. Serum AST and total bilirubin increases in such cases, and escape to the serum from the injured

hepatic cells. The serum ALT level is also useful in indicating the existence of liver diseases as it is present in the liver in large quantities. It increases in the serum when cellular degeneration or destruction of the liver happens.⁴⁰ The obtained results are consistent with previous findings by El-Demerdash⁵ and Moshtaghie et al.⁴¹ That ALP levels were significantly decreased in the liver while increased in serum following Al exposure. The decrease of the liver ALP may be due to binding of Al to DNA and RNA and inhibiting the activity of ALP.⁴² Moreover, Rahman et al.⁴³ and Gaskill et al.⁴⁴ suggested that the increase in the activities of ALP in different tissues might also be due to the increased

permeability of plasma membrane or cellular necrosis, indicating the stress condition of the treated animals. Gaskill et al⁴⁴ reported that the release of ALT and GGT from the cytoplasm of hepatic cells could have occurred secondary to cellular necrosis. In the present study, the activities of ALT and AST and GGT significantly increased in the serum of AlCl₃ groups in both mice strains. This may be due to the leakage of these enzymes from the cytoplasm of the liver cells into the general circulation and/or liver dysfunction and disturbance in the biosynthesis of these enzymes, with an alteration in the permeability of the liver membrane. The high increase of the bilirubin levels in AlCl₃ groups in both mice strains may be due to the fact that Al exposure can result in Al accumulation in the liver and this metal can be toxic to the hepatic tissue at high concentrations and may lead to high increase of the bilirubin level.⁴⁵

Differences in activity of plasma cholinesterase are correlated with variations in the risk factors for cardiovascular and metabolic disease and may be under genetic control.⁴ Plasma cholinesterase (EC 3.1.1.8; butyryl-cholinesterase, pseudocholinesterase) has been widely investigated due to being a marker of exposure to organophosphate chemicals⁴ and the relationships between low activity and the delayed metabolism of the muscle relaxant succinylcholine.⁴⁶ The decrease in butyryl cholinesterase may be associated with the dysfunction of the liver after the administration of AlCl₃. Hyperglycemia may be induced as a result of the increased glucose production and decreased glucose utilization. The increase in blood glucose may be a sign of disrupted carbohydrate metabolism owing to increased breakdown of liver glycogen.^{6,7} In addition, oxidative stress has been proposed as a major pathogenic link to both insulin resistance and the dysfunction of the pancreatic beta cell by the formation of amyloid proteins, which not only prevents the release of insulin into the circulation, but also destroys the insulin-secreting beta cells.⁴⁷ Growing evidence indicates that chronic or acute overproduction of reactive oxygen species plays an important causal or contributing role in the development of many diseases⁴⁸ and the protective effects of crocin or crocetin against cardiovascular, liver and tumor diseases has been repeatedly demonstrated in various studies.^{18,49,50} This effect may explain the antioxidant capacities of saffron that improved the disrupted liver biochemical markers happened in AlCl₃+saffron groups in this study.

Lipid peroxidation, as one of the major signs of oxidative damage, has been found to have an essential role in the toxicity of numerous xenobiotics.⁵¹ Furthermore, various chronic diseases, especially cardiovascular disease and cancer are associated with oxidative damage to biomolecules such as lipids, DNA, and proteins.⁵²

It was found that Al at sub-lethal levels induced lipid peroxidation and thus altered the physiological and biochemical properties of many biological systems.⁶ The antioxidant properties of honey syrup^{25,53} and the water extract of saffron^{18,49,50} may have led to alleviation of the disturbances in all biochemical parameters. In addition, the antioxidant effect of saffron and honey led to scavenging the free radical associated with the injection of AlCl₃ in both mice strains, and a decrease in the oxidative stress as shown by the increase of thiobarbituric acid reactive substances. The antioxidant properties of both tested natural treatments may have prevented the leakage of hepatic enzymes as shown by the decrease in butyryl cholinesterase, GGT, AST, ALT, ALP and bilirubin.

The regenerative liver gene or the ribonuclease genes ribonuclease (RNAase 4) was induced in AlCl₃+honey and AlCl₃+saffron groups in BALB/c mice. Zaho et al⁵⁴ reported that the presence of 4 members of the pyrimidine-specific ribonuclease superfamily was demonstrated in rat liver. The up-regulation of RNAase 4 gene may lead to resisting the toxic effect of the Al on the liver cells.⁵⁵ Ardel et al⁵⁶ have also stated that cytotoxic RNAases, as exemplified by Onconase, represent a new class of antitumor agents with an entirely different mechanism of action than the drugs currently used in clinics. Further studies on animal models including human tumors grafted onto severe combined immune deficient (SCID) mice, and clinical trials are needed to explore the clinical potential of cytotoxic RNAases. It has been reported that the excretion of Al in urine was significantly increased after the intake of analgesics containing Al, which confirming the increased absorption and hence increased exposure to Al as a result of such medication.^{57,58} The up-regulation of the renin expression by Al is a strong indication of the influence of Al on the renin-angiotensin-aldosterone-system, resulting in possible induction of essential hypertension.^{57,58}

One limitation of this study is that we tested the effect of co-administration of saffron extract and honey syrup with AlCl₃. Therefore, further studies should test pre- and post- administration of those natural products with AlCl₃ in order to discover whether they have therapeutic or protective effect against Al hepatotoxicity.

In conclusion, Al has adverse effects on human health. Our results reported that AlCl₃ is capable of causing marked alterations in some biochemical parameters and inducing oxidative damage in the liver. The administration of the water extract of saffron and honey syrup with AlCl₃ has minimized its hazards. In addition, the water extract of saffron was proved to be beneficial in decreasing the levels of free radicals in the livers of both mice strains. The molecular changes

showed that Al causes a great deal of liver cell damage and both saffron and honey syrup resist these degenerative changes by induction the structure and function genes. One of these genes is Aa2-245, the ribonuclease, RNAase A family 4, ribonucleases which is widely found in living organisms and has been suggested to be involved in RNA metabolism and the regulation of gene expression.

References

- Yokel RA. The toxicology of aluminum in the brain: a review. *Neurotoxicology* 2000; 21: 813-828.
- Ochmański W, Barabasz W. [Aluminum--occurrence and toxicity for organisms]. *Przegl Lek* 2000; 57: 665-668. Polish
- Randell EW, Mathews MS, Zhang H, Seraj JS, Sun G. Relationship between serum butyrylcholinesterase and the metabolic syndrome. *Clin Biochem* 2005; 38: 799-805.
- Valle A, O'Connor DT, Taylor P, Zhu G, Montgomery GW, Slagboom PE, et al. Butyrylcholinesterase: association with the metabolic syndrome and identification of 2 gene loci affecting activity. *Clin Chem* 2006; 52: 1014-1020.
- El-Demerdash FM. Antioxidant effect of vitamin E and selenium on lipid peroxidation, enzyme activities and biochemical parameters in rats exposed to aluminium. *J Trace Elem Med Biol* 2004; 18: 113-121.
- Yousef MI. Aluminium-induced changes in hemato-biochemical parameters, lipid peroxidation and enzyme activities of male rabbits: protective role of ascorbic acid. *Toxicology* 2004; 199: 47-57.
- Newairy ASA, Salama AF, Hussien HM, Yousef MI. Propolis alleviates aluminium-induced lipid peroxidation and biochemical parameters in male rats. *Food Chem Toxicol* 2009; 47: 1093-1098
- Burham PC. Molecular basis for adaptive responses during chemically induced hepatotoxicity. *Toxicol Sci* 2006; 89: 349-351.
- Vieželenė D, Rodovi ius H, Ivanov L. Effect of aluminum ions on the activities of tRNA^{Leu} and leucyl-tRNA synthetase in mouse liver in vivo and in vitro. *Biologija* 2006; 4: 28-30.
- Ni H, Simile C, Hardy AM. Utilization of complementary and alternative medicine by United States adults: results from the 1999 national health interview survey. *Med Care* 2002; 40: 353-358.
- Ernst E. When natural is not harmless. *Int J Clin Pract* 2006; 60: 380-380.
- Bruno JJ, Ellis JJ. Herbal Use Among US Elderly: 2002 National Health Interview Survey (April). *Ann Pharmacother* 2005; 39: 643-648.
- DeFeudis FV, Papadopoulos V, Drieu K. Ginkgo biloba extracts and cancer: a research area in its infancy. *Fundam Clin Pharm* 2003; 17: 405-417.
- Takeoka GR, Dao LT. Antioxidant constituents of almond [*Prunus dulcis* (Mill.) DA Webb] hulls. *J Agric Food Chem* 2003; 51: 496-501.
- Yang B, Liu X, Gao Y. Extraction optimization of bioactive compounds (crocin, geniposide and total phenolic compounds) from *Gardenia* (*Gardenia jasminoides* Ellis) fruits with response surface methodology. *Innov Food Sci Emerg* 2009; 10: 610-615.
- Mousavi SH, Tayarani NZ, Parsae H. Protective Effect of Saffron Extract and Crocin on Reactive Oxygen Species-Mediated High Glucose-Induced Toxicity in PC12 Cells. *Cell Mol Biol* 2010; 30: 185-191.
- Magesh V, Singh JPV, Selvendiran K, Ekambaram G, Sakthisekaran D. Antitumor activity of crocetin in accordance to tumor incidence, antioxidant status, drug metabolizing enzymes and histopathological studies. *Mol Cell Biochem* 2006; 287: 127-135.
- Xiang M, Qian ZY, Zhou CH, Liu J, Li WN. Crocetin inhibits leukocyte adherence to vascular endothelial cells induced by AGEs. *J Ethnopharmacol* 2006; 107: 25-31.
- Chen Y, Zhang H, Tian X, Zhao C, Cai L, Liu Y, et al. Antioxidant potential of crocins and ethanol extracts of *Gardenia jasminoides* ELLIS and *Crocus sativus* L.: A relationship investigation between antioxidant activity and crocin contents. *Food Chem* 2008; 109: 484-492.
- Saxena S, Gautam S, Sharma A. Physical, biochemical and antioxidant properties of some Indian honeys. *Food Chem* 2010; 118: 391-397.
- Blasa M, Candiracci M, Accorsi A, Piacentini MP, Albertini MC, Piatti E. Raw Millefiori honey is packed full of antioxidants. *Food Chem* 2006; 97: 217-222.
- Guler A, Bakan A, Nisbet C, Yavuz O. Determination of important biochemical properties of honey to discriminate pure and adulterated honey with sucrose (*Saccharum officinarum* L.) syrup. *Food Chem* 2007; 105: 1119-1125.
- Shahid M. Honey: Biological Characteristics and Potential Role in Disease Management. *New Strategies Combating Bacterial Infection* 2008; 10: 1.
- Gomez-Caravaca M, Gomez-Romero M, Arraez-Roman D, Segura-Carretero A, Fernandez-Gutierrez A. Advances in the analysis of phenolic compounds in products derived from bees. *J Pharmaceut Biomed* 2006; 41: 1220-1234.
- Gheldof N, Wang XH, Engeseth NJ. Buckwheat honey increases serum antioxidant capacity in humans. *J Agric Food Chem* 2003; 51: 1500.
- Knedel M, Bottger R. A kinetic method for determination of the activity of pseudocholinesterase (acylcholine acyl-hydrolase 3.1.1.8.). *Wien Klin Wochenschr* 1967; 45: 325.
- Szasz G. Kinetic photometric method for serum γ -glutamyl Transpep-tidases. *Clin Chem* 1969; 22: 124-136.
- Reitman S, Frankel S. Colorimetric methods for the determination of glutamic oxaloacetic and glutamic pyruvic transferase. *Am J Clin Pathol* 1957; 28: 56-63.
- Belfield A, Goldberg DM. Revised assay for serum phenyl phosphatase activity using 4-amino-antipyrine. *Enzyme* 1971; 12: 561.
- Walter M, Grade H. Bilirubin assay. *Microchem J* 1970; 15: 231.
- Trinder P. Colourimetric method for the serum glucose. *Ann Clin Biochem* 1969; 4: 24.
- Wieland H, Seidel D. A simple specific method for precipitation of low density lipoproteins. *J Lipid Res* 1983; 24: 904.
- Fossati P, Prencipe L. Serum Triglycerides determined colourimetrically with an enzyme that produces hydrogen peroxide. *Clin Chem* 1982; 28: 2077-2080.
- Ohkawa H, Ohishi N, Yagi K. Assay for lipid peroxides in animal tissues by thiobarbituric acid reaction. *Anal Biochem* 1979; 95: 351-358.
- Seufi AEM, Ibrahim SS, Elmaghraby TK, Hafez EE. Preventive effect of the flavonoid, quercetin, on hepatic cancer in rats via oxidant/antioxidant activity: molecular and histological evidences. *J Exp Clin Canc Res* 2009; 28: 80.
- Abd El Fattah AI, Alamri S, Abou-Shanab R, Hafez E. Fingerprinting of *Ustilago scitaminea* (Sydow) in Egypt using Differential Display Technique: Chitinase Gene the Main Marker. *Res J Agri Bio Sci* 2010; 1: 8-13

37. Thompson JD, Higgins DG, Gibson TJ. CLUSTAL W: improving the sensitivity of progressive multiple sequence alignment through sequence weighting, position-specific gap penalties and weight matrix choice. *Nucleic Acids Res* 1994; 22: 4673.
38. Kumar S, Tamura K, Nei M. MEGA3: integrated software for molecular evolutionary genetics analysis and sequence alignment. *Brief Bioinform* 2004; 5: 150
39. Nikolov IG, Joki N, Vicca S, Patey N, Auchère D, Benchitrit J, et al. Tissue Accumulation of Lanthanum as Compared to Aluminum in Rats with Chronic Renal Failure–Possible Harmful Effects after Long-Term Exposure. *Nephron Exp Nephrol* 2010; 115: e112-e121.
40. Miyazaki M, Rosenblum JS, Kasahara Y, Nakagawa I, Patricelli MP. Determination of enzymatic source of alanine aminotransferase activity in serum from dogs with liver injury. *J Pharmacol Toxicol* 2009; 60: 307-315.
41. Moshtaghi AA, Ani M, Mirhashemi SM. Comparative effects of aluminium on serum, liver and brain high and low molecular weight alkaline phosphatase in rats. *J Med Sci* 2006; 6: 848-852.
42. Ochmaski W, Barabasz W. Aluminum--occurrence and toxicity for organisms. *Przegla d Lekarski* 2000; 57: 665-668.
43. Rahman MF, Siddiqui MKJ, Jamil K. Acid and alkaline phosphatase activities in a novel phosphorothionate (RPR-11) treated male and female rats. Evidence of dose and time-dependent response. *Drug Chem Toxicol* 2000; 23: 497-509.
44. Gaskill CL, Miller LM, Mattoon JS, Hoffmann WE, Burton SA, Gelens HCJ, et al. Liver histopathology and liver and serum alanine aminotransferase and alkaline phosphatase activities in epileptic dogs receiving phenobarbital. *Vet Pathol* 2005; 42: 147-160.
45. Gonzalez MA, Alvarez ML, Pisani GB, Bernal CA, Roma MG, Carrillo MC. Involvement of oxidative stress in the impairment in biliary secretory function induced by intraperitoneal administration of aluminum to rats. *Biol Trace Elem Res* 2007; 116: 329-348.
46. Yen T, Nightingale BN, Burns JC, Sullivan DR, Stewart PM. Butyrylcholinesterase (BCHE) genotyping for post-succinylcholine apnea in an Australian population. *Clin Chem* 2003; 49: 1297-1308.
47. Hayden MR. Islet myeloid, metabolic syndrome and the natural progressive history of type 2 diabetes mellitus. *J Pancreas* 2002; 3: 126-138.
48. Wattanapitayakul SK, Bauer JA. Oxidative pathways in cardiovascular disease: roles, mechanisms, and therapeutic implications. *Pharmacol Ther* 2001; 89: 187-206.
49. Ahmad AS, Ansari MA, Ahmad M, Saleem S, Yousuf S, Hoda MN, et al. Neuroprotection by crocetin in a hemi-parkinsonian rat model. *Pharmacol Biochem Behav* 2005; 81: 805-813.
50. Shen XC, Qian ZY. Effects of crocetin on antioxidant enzymatic activities in cardiac hypertrophy induced by norepinephrine in rats. *Pharmazie* 2006; 61: 348-352.
51. Anane R, Creppy EE. Lipid peroxidation as pathway of aluminium cytotoxicity in human skin fibroblast cultures: prevention by superoxide dismutase+ catalase and vitamins E and C. *Hum Exp Toxicol* 2001; 20: 477.
52. Hwang ES, Kim GH. RETRACTED: Biomarkers for oxidative stress status of DNA, lipids, and proteins in vitro and in vivo cancer research. *Toxicology* 2007; 229: 1-10.
53. Beretta G, Granata P, Ferrero M, Orioli M, Maffei Facino R. Standardization of antioxidant properties of honey by a combination of spectrophotometric/fluorimetric assays and chemometrics. *Analytica Chimica Acta* 2005; 533: 185-191.
54. Zhao W, Kote-Jarai Z, van Santen Y, Hofsteenge J, Beintema JJ. Ribonucleases from rat and bovine liver: purification, specificity and structural characterization1. *BBA-Protein Struc TM* 1998; 1384: 55-65.
55. Tang PC, Huang HC, Wang SC, Jeng JC, Liao YD. Regulation of ribonuclease expression by estradiol in *Rana catesbeiana* (Bullfrog). *Nucleic Acids Res* 2002; 30: 3286.
56. Ardel W, Ardel B, Darzynkiewicz Z. Ribonucleases as potential modalities in anticancer therapy. *Eur J Pharmacol* 2009; 625: 181-189.
57. Ezomo OF, Matsushima F, Meshitsuka S. Up-regulation in the expression of renin gene by the influence of aluminium. *J Inorg Biochem* 2009; 103: 1563-1570.
58. Maloney CA, Lilley C, Cruickshank M, McKinnon C, Hay SM, Rees WD. The expression of growth-arrest genes in the liver and kidney of the protein-restricted rat fetus. *Br J Nutr* 2007; 94: 12-18.

Related topics

Golalipour MJ, Gharravi AM, Ghafari S, Afshar M, Khori V. Effects of crocus sativus on the fetal development of NMRI mice. *Saudi Med J* 2008; 29: 309-310.

Alotaibi WM. Severe hepatic dysfunction after sevoflurane exposure. *Saudi Med J* 2008; 29: 1344-1346.

Kutlubay R, Oguz EO, Abban G, Turgut S. Amelioration of aluminium-induced liver damage by vitamin E. *Saudi Med J* 2007; 28: 197-200.

Sulaiman AA, Al-Shawi NN, Jwaied AH, Mahmood DM, Hussain SA. Protective effect of melatonin against chlorpromazine-induced liver disease in rats. *Saudi Med J* 2006; 27: 1477-1482.