

Assessment of Crohn's disease activity by Doppler sonography

Ying Na, MM, Jian Zhou, MM, Xiang-Min Xiao, MM, Wen-Xing Zhang, MM, Hong-Lei Gao, MM, Yang Wang, MM, Xiao-Yan Han, MM, Zuo-Cheng Sun, MM, Hui-Min Xu, MD.

ABSTRACT

الأهداف: تحقيق دقة التشخيص بالموجات فوق الصوتية لتقييم التهابات النشاط في المرضى الذين يعانون من مرض كرون (CD).

الطريقة: سجل 56 مريض يعانون من مرض كرون (39 نشط و 17 غير نشط) و 30 متوطعا من الأصحاء كمجموعة مرجعية في مستشفى ينانغ الشعبية بمقاطعة ينانغ، والصين من أكتوبر 2012 إلى ديسمبر 2014. تم قياس سمك جدار الأمعاء ونمط الأوعية الدموية عن طريق موجات دوبلر فوق الصوتية.

النتائج: كان هناك فرق كبير في حجم تدفق الشريان المساريقي العلوي (585 ± 235 مل / دقيقة) في المرضى الذين يعانون من مرض نشط، مقارنة مع ممن لديهم مرض غير نشط (401 ± 238 مل / دقيقة) والمجموعة المرجعية (390 ± 189 مل / دقيقة، $p < 0.001$). كان سمك جدار 5.1 ± 1.5 مم في مجموعة CD النشطة، 3.3 ± 1.6 مم في مجموعة المرض غير النشط ($p < 0.001$) و 3 مم في مجموعة التحكم. أظهر مؤشر المقاومة في جدار الأمعاء السميكة بعض الاختلافات: 0.68 ± 0.05 في مجموعة المرض النشطة، 0.78 ± 0.08 في المجموعة المرض غير النشط، و 0.85 ± 0.07 في مجموعة التحكم ($p < 0.05$).

الخلاصة: تعد موجات دوبلر فوق الصوتية أداة تشخيص مفيدة في الكشف عن مرض كرون ولتقييم نشاط التهابات.

Objectives: To investigate the diagnostic accuracy of ultrasound for evaluation of inflammatory activity in patients with Crohn's disease (CD).

Methods: Fifty-six patients with histologically proven CD (39 with active, 17 with inactive disease) and 30 healthy volunteers as a control group were enrolled in the study at WeiFang People's Hospital, Weifang Province, China from October 2012 to December 2014. Bowel wall thickness, and vascularity pattern were measured by Doppler ultrasound.

Results: There was a significant difference in flow volume of the superior mesenteric artery (585 ± 235 ml/min) in the patients with active disease, compared with those

with inactive disease (401 ± 238 ml/min) and the control group (390 ± 189 ml/min, $p < 0.001$). Wall thickness was 5.1 ± 1.5 mm in the active CD group, 3.3 ± 1.6 mm in the inactive disease group ($p < 0.001$) and < 3 mm in the control group. Resistance index in the thickened bowel wall showed some differences: 0.68 ± 0.05 in the active disease group, 0.78 ± 0.08 in the inactive disease group, and 0.85 ± 0.07 in the control group ($p < 0.05$).

Conclusion: Doppler ultrasound is a useful diagnostic tool in detecting CD and assessing inflammatory activity.

Saudi Med J 2017; Vol. 38 (4): 391-395
doi: 10.15537/smj.2017.4.17855

From the Department of General Surgery (Xu, Zhou, Xiao, Zhang, Gao, Wang, Han, Sun), and the Department of Ultrasound (Na) Weifang People's Hospital, Weifang, Shandong Province, China.

Received 24th November 2016. Accepted 21st December 2016.

Address correspondence and reprint request to: Dr. Hui-Min Xu, Department of General Surgery, Weifang People's Hospital, Weifang, Shandong Province, China. E-mail: xhm001@126.com
ORCID: <http://orcid.org/0000-0001-8896-571X>

Periodic assessment of the inflammatory activity and extent of Crohn's disease (CD) is important to plan the proper therapeutic schedule. The small bowel is involved in 30-40% of patients with CD and the ileocecal segment in 50%. Endoscopic evaluation of the terminal ileum is feasible, and a rate of 95% has been reported.^{1,2} However, it is an invasive method with poor tolerance. In recent years, wireless capsule endoscopy, computed tomography (CT), magnetic resonance imaging (MRI), and biomarkers have been used as effective tools for diagnose of inflammatory

Disclosure. Authors have no conflict of interest, and the work was not supported or funded by any drug company.

bowel disease.³⁻⁷ Each method comes with its own advantages and disadvantages.^{8,9} Doppler ultrasound is a noninvasive, safe, well tolerated, cheap, and reproducible technique. Doppler ultrasound might play a significant role for investigation of CD. The purpose of this prospective study was to test the diagnostic accuracy of ultrasound in the evaluation of inflammatory activity in patients CD.

Methods. We enrolled 56 patients (25 female, 31 male; mean age 37.5 ± 10.8 years; range 20-62 years) with histologically proven CD (39 with active, 17 with inactive disease) and 30 healthy volunteers as a control group between 2012 and 2014 (Table 1). The mean post-diagnosis time was 8.5 ± 9.3 years. Diagnosis was performed according to the second European Evidence-Based Consensus on the diagnosis and management of CD. Patients who underwent abdominal surgery were excluded. Ethics approval was given by the Research Ethics Committee of WeiFang People's Hospital. All patients provided written informed consent. Endoscopy with biopsy was performed in all cases. Patients with any surgical procedures on the small bowel or colon were excluded. Disease activity was assessed using the CD Activity Index (CDAI). Clinical response was a decrease in CDAI of 100 points. Disease was classified as inactive if CDAI was <150 and active with CDAI ≥ 150 . CD with moderate activity has a CDAI of 150-450 and strong activity has CDAI >450 .¹⁰ Sonography was performed using a GE LOGIQ S6 scanner (GE, Fairfield, USA). The examinations were performed after the patient had fasted for at least 8 hours. A graded compression technique was used. Ultrasound was performed by the same sonographer with 16 years working experience

in the patient cohort, who was blind for the patients. Sonography included evaluation of bowel wall thickness and spectral analysis of the thickened bowel wall. The gastrointestinal tract was divided into 5 segments: ileum and cecum, ascending colon, transverse colon, descending colon, and the rectosigmoid. The entire abdomen was examined with more attention to the terminal ileum. Maximum bowel wall thickness was assessed. Bowel wall thickness >3.5 mm was considered abnormal.^{11,12} The probe was placed 1-2 cm from the origin of the superior mesenteric artery in all patients. The Doppler parameters of the mesenteric artery were: peak systolic velocity (PSV), end-diastolic velocity (EDV), resistance index (RI), mean velocity flow (MV), and flow volume (ml/min) was automatically calculated by the Doppler instrument ($MV \times$ cross-sectional area). Each measurement was picked-up 3 times and the average was recorded.

The results were analyzed using the Statistical Package for the Social Sciences (SPSS Inc., Chicago, IL, USA) version 18. Kruskal-Wallis and Mann-Whitney were used to test the differences in the 3 groups and $p < 0.05$ was considered to be statistically significant.

Results. The parameters of the superior mesenteric artery showed no significant difference in the 3 groups, except the flow volume. There was a significant difference in flow volume of the superior mesenteric artery in the active CD group (585 ± 235 ml/min), compared with the inactive disease (401 ± 238 ml/min) and control (390 ± 189 ml/min, $p < 0.001$, Figure 1) groups. Median wall thickness of the affected bowel loop showed a significant difference between the active (5.1 ± 1.5 mm) and inactive CD (3.3 ± 1.6 mm) groups

Table 1 - Characteristics of 56 patients with history of chronic disease and 30 healthy volunteers.

Parameter	Active Crohn's disease (n=39)	Inactive Crohn's disease (n=17)	Controls (n=30)
Age (years)	36.5 ± 10.6	39.7 ± 11.4	38.6 ± 10.3
Gender (females/males)	16/23	9/8	14/16
Mean duration (months)	8.3 ± 9.1	8.9 ± 9.9	

Table 2 - Doppler parameter values of patients from the 3 groups.

Doppler ultrasound parameters	Active (Mean \pm SD)	Inactive (Mean \pm SD)	Control (Mean \pm SD)	P-value
Flow volume (ml/min)	585 ± 235	401 ± 238	390 ± 189	< 0.001
Wall thickness(mm)	5.1 ± 1.5	3.3 ± 1.6	< 3	< 0.001
Resistance index	0.68 ± 0.05	0.78 ± 0.08	0.85 ± 0.07	< 0.05

and the control group (<3 mm, $p<0.001$, Figure 2). Resistance index and flow volume of the mural artery showed significant differences in the three groups. Median RI in the inactive CD group was 0.78 ± 0.08 , compared with 0.85 ± 0.07 in the control group, and low resistance arterial spectrum was found in the active disease group (0.68 ± 0.05 , $p<0.05$, Figure 3, Table 2).

Discussion. Periodic assessment is important for CD, which has a chronic relapsing course.¹³ The CDAI is the gold standard for evaluating disease activity, but this index has a low sensitivity as it is based on subjective symptoms. Barium enema, small bowel follow-through, and colonoscopy remain important tests for diagnosing

CD. The CT and MRI are techniques of choice in some cases. More than 20% of CD patients present before the age of 18 years.¹⁴ Colonoscopy and barium studies, and CT have important risks of perforation and cumulative ionizing radiation, therefore, their use is limited in patients with CD, especially for young patients and those with multiple relapses.¹⁵ Ultrasound has the significant advantage of being noninvasive, widely available, cheap, radiation free, and user friendly.¹⁶⁻¹⁸ Inflamed bowel segments with a thickened, hypoechoic wall are easily differentiated from normal bowel segments by ultrasound. So, ultrasound is well positioned for assessment of CD.^{14,19} Evaluation of thickened bowel wall is important for assessing CD activity.

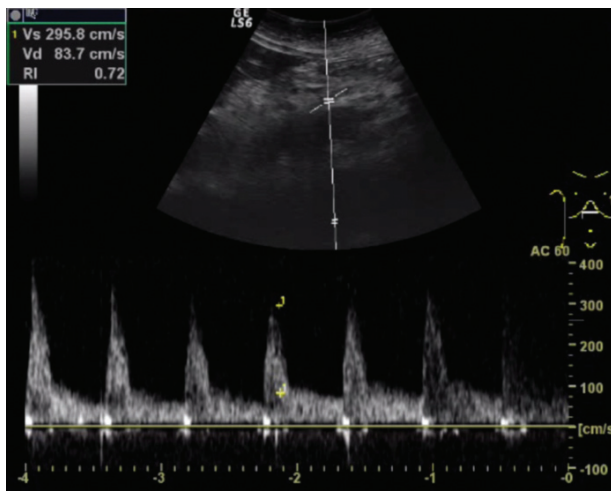


Figure 1 - Flow volume of the superior mesenteric artery of patient with active Crohn disease.

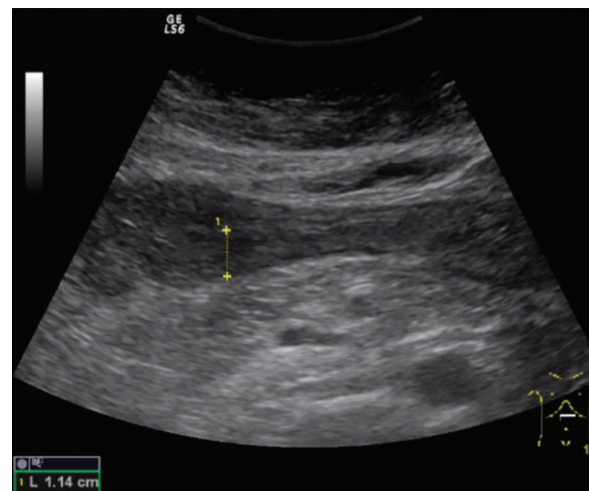


Figure 2 - Wall thickness of the affected bowel loop of patient with active Crohn disease.

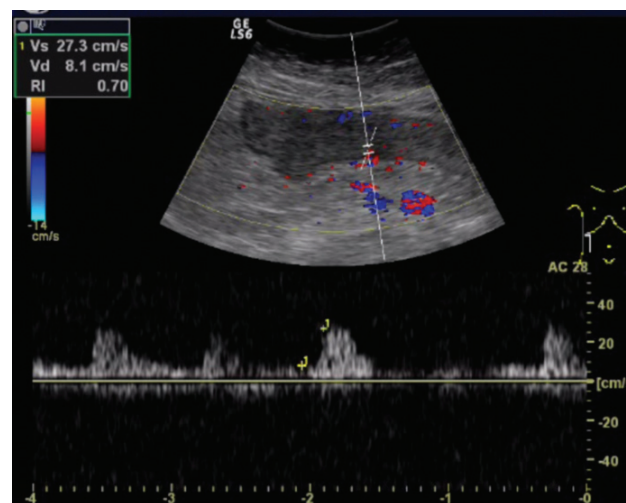


Figure 3 - Resistance index in affected bowel wall of patient with active Crohn disease.

A correlation between bowel wall thickness and clinical activity has already been reported.¹⁸ The threshold for a positive diagnosis is from 1.5 to 3 mm in the terminal ileum and <2 mm in the colon for children and 3 mm for adults.²⁰⁻²² Patients with active CD have thicker affected bowel loops than patients with inactive disease. The reason for thickening is a combination of inflammation, edema and muscular spasm in active disease. It is difficult for Doppler ultrasound to be diagnostic in the initial stage of CD when only the mucosa is involved. In this case, endoscopy and conventional radiology are dependable. In advanced stages, pathomorphological changes affect the submucosa or muscular layer, and Doppler ultrasound is more accurate.²³ In rare cases, thickened bowel wall is found in inactive CD for fibrosis. These patients would be false positive and hard to differentiate from the active group when assessing CD by ultrasound. Our study showed no significant difference in PSV and EDV values between active and inactive CD, but we found a significant difference in RI values in mural arteries. Higher values of flow volume and lower RI of mural arteries in thickened bowel wall were recorded in different studies.^{22,24,25} The probable reason is arterial hyperemia in the thickened gut wall of Crohn's disease. In addition, ultrasound is useful for identifying intra-abdominal complications (abscesses, fistulae and strictures).^{26,27} Ultrasound has an overall sensitivity of 74% and a specificity of 78% for detection of small bowel CD lesions, especially in the terminal ileum (90–95%).²⁸

The sonographer scanned the patients. It would be better if the results were evaluated by 2 or more radiologists for ultrasound, the operator's subjective factors determine the outcome. More cases are needed to validate the findings of this study. In further studies, Contrast-enhanced ultrasound may provide valuable quantitative assessment of the bowel.

In conclusion, the results of this study show that ultrasound is a good technique to detect affected bowel segments in patients with CD. Sonography is a useful tool in the assessment and follow-up of patients with CD.

References

- Migaleddu V, Scanu AM, Quaia E, Rocca PC, Dore MP, Scanu D, et al. Contrast-enhanced ultrasonographic evaluation of inflammatory activity in Crohn's disease. *Gastroenterology* 2009; 137: 43-52.
- Jun S, Hua RZ, Lu TJ, Xiang C, Dong XS. Are endoscopic grading and scoring systems in inflammatory bowel disease the same? *Saudi Med J* 2008; 29: 1432-1437.
- Ouahed J, Shagrani M, Sant'Anna A. Role of wireless capsule endoscopy in reclassifying inflammatory bowel disease in children. *Jornal De pediatria* 2013; 89: 204-209.
- Kovanlikaya A, Watson E, Hayward J, Beneck D, Sockolow R, Solomon A, et al. Magnetic resonance enterography and wireless capsule endoscopy in the evaluation of patients with inflammatory bowel disease. *Clin Imaging* 2013; 37: 77-82.
- Petruzzello C, Calabrese E, Onali S, Zuzzi S, Condino G, Ascolani M, et al. Small bowel capsule endoscopy vs conventional techniques in patients with symptoms highly compatible with Crohn's disease. *J Crohns Colitis* 2011; 5: 139-147.
- Hisamatsu T, Okamoto S, Hashimoto M, Muramatsu T, Andou A, Uo M, et al. Novel, objective, multivariate biomarkers composed of plasma amino acid profiles for the diagnosis and assessment of inflammatory bowel disease. *PLoS One* 2012; 7: e31131.
- Yuksel ES, Ipek S, Topal F, Koc G, Akpınar Z, Slaughter JC, et al. Assessment of presence and grade of activity in ileal Crohn's disease. *Turk J Gastroenterol* 2014; 25: 264-270.
- Stange EF, Travis SP, Vermeire S, Beglinger C, Kupcinkas L, Geboes K, et al. European evidence based consensus on the diagnosis and management of Crohn's disease: definitions and diagnosis. *Gut* 2006; 55: 1-15.
- Martinez MJ, Ripolles T, Paredes JM, Blanc E, Marti-Bonmati L. Assessment of the extension and the inflammatory activity in Crohn's disease: comparison of ultrasound and MRI. *Abdom Imaging* 2009; 34: 141-148.
- Schirbel A, Reichert A, Roll S, Baumgart DC, Buning C, Wittig B, et al. Impact of pain on health-related quality of life in patients with inflammatory bowel disease. *World J Gastroenterol* 2010; 16: 3168-3177.
- Migaleddu V, Quaia E, Scano D, Virgilio G. Inflammatory activity in Crohn disease: ultrasound findings. *Abdom Imaging* 2008; 33: 589-597.
- Pallotta N, Giovannone M, Pezzotti P, Gigliozzi A, Barberani F, Piacentino D, et al. Ultrasonographic detection and assessment of the severity of Crohn's disease recurrence after ileal resection. *BMC Gastroenterol* 2010; 10: 69.
- Calabrese E, Zorzi F, Pallone F. Ultrasound of the small bowel in Crohn's disease. *Int J Inflam* 2012; 2012: 964720.
- Casciani E, De Vincentiis C, Poletini E, Masselli G, Di Nardo G, Civitelli F, et al. Imaging of the small bowel: Crohn's disease in paediatric patients. *World J Radiol* 2014; 6: 313-328.
- Ripolles T, Martinez MJ, Paredes JM, Blanc E, Flors L, Delgado F. Crohn disease: correlation of findings at contrast-enhanced US with severity at endoscopy. *Radiology* 2009; 253: 241-248.
- Ripolles T, Martinez-Perez MJ, Blanc E, Delgado F, Vizuete J, Paredes JM, et al. Contrast-enhanced ultrasound (CEUS) in Crohn's disease: technique, image interpretation and clinical applications. *Insights Imaging* 2011; 2: 639-652.
- Calabrese E, Zorzi F, Zuzzi S, Ooka S, Onali S, Petruzzello C, et al. Development of a numerical index quantitating small bowel damage as detected by ultrasonography in Crohn's disease. *J Crohns Colitis* 2012; 6: 852-860.
- Braden B, Ignee A, Hocke M, Palmer RM, Dietrich C. Diagnostic value and clinical utility of contrast enhanced ultrasound in intestinal diseases. *Dig Liver Dis* 2010; 42: 667-674.
- Thomson M, Rao P, Berger L, Rawat D. Graded compression and power Doppler ultrasonography versus endoscopy to assess paediatric Crohn disease activity pre- and posttreatment. *J Pediatr Gastroenterol Nutr* 2012; 54: 404-408.

20. Alison M, Kheniche A, Azoulay R, Roche S, Sebag G, Belarbi N. Ultrasonography of Crohn disease in children. *Pediatr Radiol* 2007; 37: 1071-1082.
21. Darge K, Anupindi S, Keener H, Rompel O. Ultrasound of the bowel in children: how we do it. *Pediatr Radiol* 2010; 40: 528-536.
22. Sjekavica I, Barbaric-Babic V, Sunjara V, Kralik M, Senecic-Cala I, Dujsin M, et al. Resistance index in mural arteries of thickened bowel wall: predictive value for Crohn disease activity assessment in pediatric patients. *Wien Klin Wochenschr* 2013; 125: 254-260.
23. Fraquelli M, Sarno A, Girelli C, Laudi C, Buscarini E, Villa C, et al. Reproducibility of bowel ultrasonography in the evaluation of Crohn's disease. *Dig Liver Dis* 2008; 40: 860-866.
24. Sjekavica I, Barbaric-Babic V, Krznaric Z, Molnar M, Cukovic-Cavka S, Stern-Padovan R. Assessment of Crohn's disease activity by doppler ultrasound of superior mesenteric artery and mural arteries in thickened bowel wall: cross-sectional study. *Croat Med J* 2007; 48: 822-830.
25. Karoui S, Nouira K, Serghini M, Ben Mustapha N, Boubaker J, Menif E, et al. Assessment of activity of Crohn's disease by Doppler sonography of superior mesenteric artery flow. *Croat Med J* 2010; 4: 334-340.
26. Parente F, Greco S, Molteni M, Anderloni A, Sampietro GM, Danelli PG, et al. Oral contrast enhanced bowel ultrasonography in the assessment of small intestine Crohn's disease. A prospective comparison with conventional ultrasound, x ray studies, and ileocolonoscopy. *Gut* 2004; 53: 1652-1657.
27. Castiglione F, de Sio I, Cozzolino A, Rispo A, Manguso F, Del Vecchio Blanco G, et al. Bowel wall thickness at abdominal ultrasound and the one-year-risk of surgery in patients with Crohn's disease. *Am J Gastroenterol* 2004; 99: 1977-1983.
28. Bremner AR, Griffiths M, Argent JD, Fairhurst JJ, Beattie RM. Sonographic evaluation of inflammatory bowel disease: a prospective, blinded, comparative study. *Pediatr Radiol* 2006; 36: 947-953.

Authorship entitlement

Excerpts from the Uniform Requirements for Manuscripts Submitted to Biomedical Journals updated November 2003.
Available from www.icmje.org

The international Committee of Medical Journal Editors has recommended the following criteria for authorship; these criteria are still appropriate for those journals that distinguish authors from other contributors.

Authorship credit should be based on 1) substantial contributions to conception and design, or acquisition of data, or analysis and interpretation of data; 2) intellectual content; and 3) final approval of the version to be published. Authors should meet conditions 1, 2, and 3.

Acquisition of funding, collection of data, or general supervision of the research group, alone, does not justify authorship.

An author should be prepared to explain the order in which authors are listed.