

SYSTEMATIC REVIEW

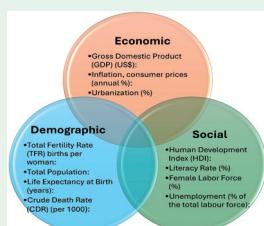
Geriatric nutritional risk index predicts postoperative delirium in elderly. *A meta-analysis*

Xi & Wu review current evidence on using the geriatric nutritional risk index (GNRI) in predicting postoperative delirium (POD) in an elderly. A total of 6 studies with 4242 patients underwent this meta-analysis, which showed that the risk of POD was higher in patients with moderate and high GNRI than the ones with low GNRI. The literature search was performed in core databases to include all the cohort studies on the association between GNRI and risk of POD for further meta-analysis. This meta-analysis showed that GNRI had a predictive effect on POD, and moderate and high malnutrition increased the risk of POD during general anesthesia. However, due to the limited number of studies in our analysis, further research is needed to confirm the relationship between the GNRI and the risk of POD after general anesthesia in different age groups, types of surgery, and malnutrition groups.

see page 869

ORIGINAL ARTICLES

The influence of social, demographic and economic factors on fertility trends in Gulf Cooperation Council countries. *A longitudinal time trend analysis-1980-2021*



Summary of the demographic, social and economic factors.

Meo et al analyze the fertility rate trends in the Gulf Cooperation Council (GCC) countries and their association with socioeconomic factors so that policymakers may use the study findings for future healthcare plans. The data were collected for the Global Burden of Disease 2021 study and other official databases such as the World Bank, the United Nations Development Program and Our World in Data for the 6 GCC countries. The plausible causes include the inclination towards postponement of marriages and excessive costs of living.

see page 935

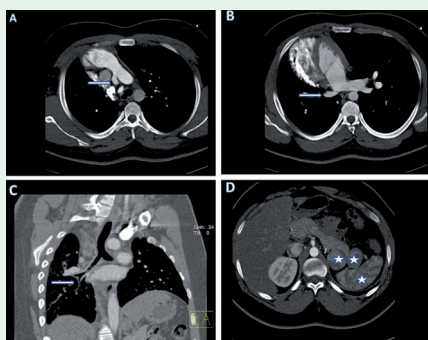
Electronic device usage among preschool children and its association with mental health status in Saudi Arabian kindergartens

Al-Mehmadi et al estimate the prevalence of electronic device usage and its association with mental health status among 399 (ages 3-6 years) in kindergartens in Makkah city in 2023-2024. We found a significant positive correlation between the number of hours spent using electronic devices and emotional problems, conduct problems, hyperactivity, peer problems, and total difficulty scores). A significant correlation was observed between electronic device use and mental health scores. Further longitudinal studies are required to understand the nature of this association and its implications for child development.

see page 945

CASE REPORT

Right lung hypoplasia associated with polysplenia. *A case report and literature review*



Computed tomography angiogram.

Almusally reports a 19-year-old, non-smoker male patient presented with a cough, sore throat and fever. No chest pain, anorexia or weight loss was noted. Additionally, no significant past medical history was documented. A computed tomography scan of the chest showed a hypoplastic right lung, which was composed only of the right lower lobe. The right pulmonary artery was tortuous and small in calibre. An abnormal orientation of the right bronchus to the right pulmonary artery with the right bronchus appeared hyperarterial. Dextroposition of the heart and mediastinum were shifted to the right. An abdominal scan showed multiple spleens, suggestive of polysplenia. An echocardiogram was performed and confirmed normal heart function and structures with cardiac activity in the right infra-axillary area.

see page 959